

Datasheet for ABIN6749776
anti-HPSE antibody (AA 68-117)

3 Images

[Go to Product page](#)

Overview

Quantity:	100 µL
Target:	HPSE
Binding Specificity:	AA 68-117
Reactivity:	Human, Mouse, Rat, Cow, Horse, Dog, Pig
Host:	Rabbit
Clonality:	Polyclonal
Conjugate:	This HPSE antibody is un-conjugated
Application:	Western Blotting (WB), Immunohistochemistry (IHC), Immunohistochemistry (Paraffin-embedded Sections) (IHC (p))

Product Details

Brand:	IHC-plus™
Immunogen:	Synthetic peptide located between aa68-117 of human HPSE (Q9Y251, NP_006656). Percent identity by BLAST analysis: Human, Gorilla, Gibbon, Monkey, Horse (100%), Galago, Marmoset, Elephant, Guinea pig (92%), Dog, Bovine, Pig, Opossum (85%), Mouse, Rat (78%). Type of Immunogen: Synthetic peptide
Specificity:	Human HPSE / Heparanase
Predicted Reactivity:	Percent identity by BLAST analysis: Human, Horse (100%) Guinea pig (92%) Dog, Bovine, Pig (85%).
Purification:	Immunoaffinity purified

Target Details

Target:	HPSE
Alternative Name:	HPSE / Heparanase (HPSE Products)
Background:	Name/Gene ID: HPSE Synonyms: HPSE, Endo-glucuronidase, Heparanase-1, Heparanase, HPA, HSE1, HEP, HPA1, HPSE1, HPR1
Gene ID:	10855
NCBI Accession:	NP_006656
UniProt:	Q9Y251
Pathways:	Glycosaminoglycan Metabolic Process

Application Details

Application Notes:	Approved: IHC, IHC-P, WB (1 µg/mL) Usage: Western Blot: Suggested dilution at 1 µg/mL in 5 % skim milk / PBS buffer, and HRP conjugated anti-Rabbit IgG should be diluted in 1: 50,000 - 100,000 as secondary antibody.
Comment:	Target Species of Antibody: Human
Restrictions:	For Research Use only

Handling

Format:	Lyophilized
Reconstitution:	Distilled water
Concentration:	Lot specific
Buffer:	Lyophilized from PBS with 2 % sucrose
Handling Advice:	Avoid repeat freeze-thaw cycles.
Storage:	4 °C,-20 °C
Storage Comment:	Long term: -20°C, the use of 50% glycerol is recommended if storing aliquots in -20°C for long term use (up to 1 year) Short term (less than 1 week): 4°C. Avoid freeze-thaw cycles.

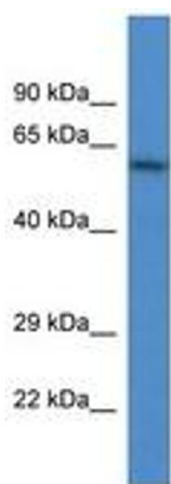


Image 1.

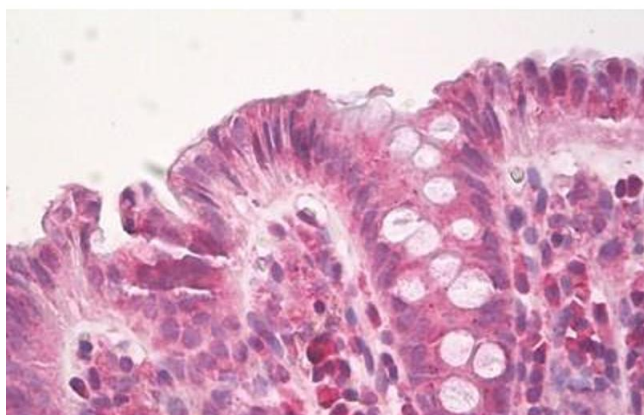
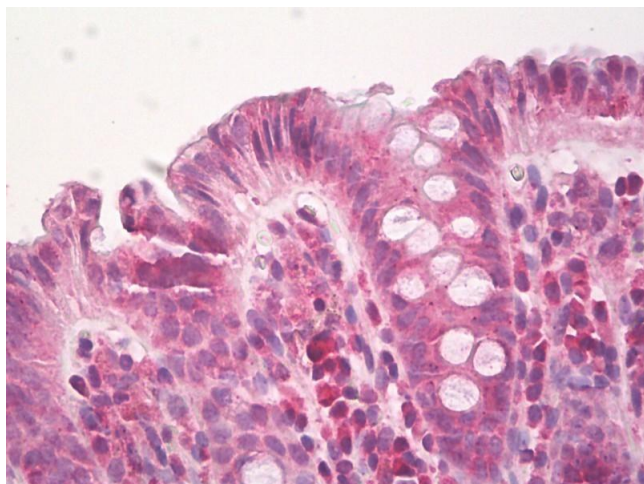


Image 2.



Immunohistochemistry

Image 3. Anti-HPSE / Heparanase antibody IHC of human colon, epithelium. Immunohistochemistry of formalin-fixed, paraffin-embedded tissue after heat-induced antigen retrieval. Antibody dilution 5-10 ug/mg lysate. This image was taken for the unconjugated for ...