

Datasheet for ABIN6749779

## anti-GTPase NRas antibody (AA 91-140)



[Go to Product page](#)

### 3 Images

#### Overview

Quantity:	100 µL
Target:	GTPase NRas (NRAS)
Binding Specificity:	AA 91-140
Reactivity:	Human, Rat, Mouse, Cow, Horse, Guinea Pig, Rabbit, Zebrafish (Danio rerio), Bat, Pig, Monkey
Host:	Rabbit
Clonality:	Polyclonal
Conjugate:	This GTPase NRas antibody is un-conjugated
Application:	Western Blotting (WB), Immunohistochemistry (IHC), Immunohistochemistry (Paraffin-embedded Sections) (IHC (p))

#### Product Details

Brand:	IHC-plus™
Immunogen:	Synthetic peptide located between aa91-140 of human NRAS (P01111, NP_002515). Percent identity by BLAST analysis: Human, Chimpanzee, Orangutan, Gibbon, Monkey, Galago, Marmoset, Mouse, Rat, Elephant, Panda, Bovine, Bat, Rabbit, Horse, Pig, Opossum, Guinea pig, Lizard (100%), Turkey, Zebra finch, Chicken (92%), Xenopus, Frog, Catfish, Medaka, Pufferfish (85%).  Type of Immunogen: Synthetic peptide
Specificity:	Human NRAS
Predicted Reactivity:	Percent identity by BLAST analysis: Human, Mouse, Bovine (100%) Chicken (92%).

## Product Details

---

Purification: Immunoaffinity purified

## Target Details

---

Target: GTPase NRas (NRAS)

Alternative Name: NRAS / N-ras ([NRAS Products](#))

Background: Name/Gene ID: NRAS  
Subfamily: RAS oncogene  
Family: Ras GTPase superfamily IPR001806

Synonyms: NRAS, HRAS1, NRAS1, NS6, ALPS4, Transforming protein N-Ras, N-ras, N-ras protein part 4, GTPase NRas

Gene ID: 4893

NCBI Accession: [NP\\_002515](#)

UniProt: [P01111](#)

Pathways: [p53 Signaling](#), [MAPK Signaling](#), [RTK Signaling](#), [Fc-epsilon Receptor Signaling Pathway](#), [EGFR Signaling Pathway](#), [Neurotrophin Signaling Pathway](#), [Hepatitis C](#), [Regulation of long-term Neuronal Synaptic Plasticity](#), [VEGF Signaling](#)

## Application Details

---

Application Notes: Approved: IHC, IHC-P (5 - 10 µg/mL), WB

Comment: Target Species of Antibody: Human

Restrictions: For Research Use only

## Handling

---

Format: Lyophilized

Reconstitution: Distilled water

Concentration: Lot specific

Buffer: Lyophilized from PBS with 2 % sucrose

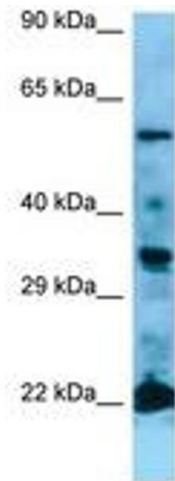
Handling Advice: Avoid repeat freeze-thaw cycles.

Storage: 4 °C, -20 °C

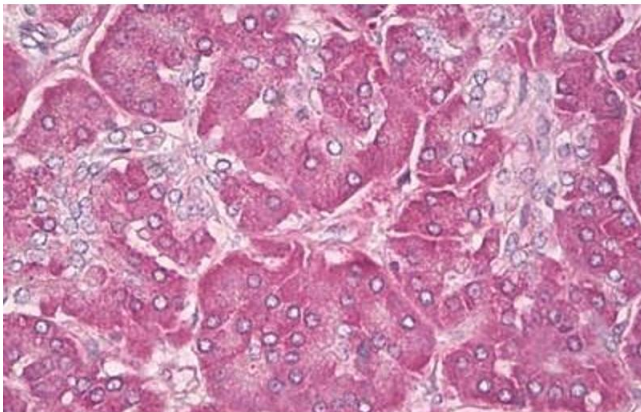
## Handling

Storage Comment: Long term: -20°C, the use of 50% glycerol is recommended if storing aliquots in -20°C for long term use (up to 1 year)  
Short term (less than 1 week): 4°C. Avoid freeze-thaw cycles.

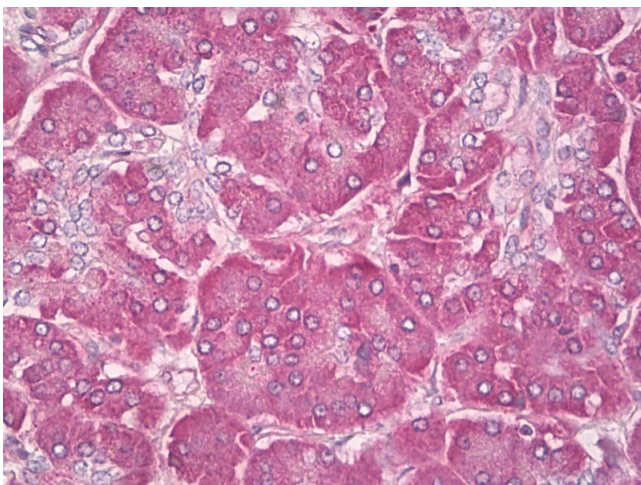
## Images



**Image 1.**



**Image 2.**



### Immunohistochemistry

**Image 3.** Human, Pancreas: Formalin-Fixed Paraffin-Embedded (FFPE). This image was taken for the unconjugated form of this product. Other forms have not been tested.