

Datasheet for ABIN6749788
anti-SH2D4A antibody (AA 145-194)[Go to Product page](#)

2 Images

Overview

Quantity:	100 µL
Target:	SH2D4A
Binding Specificity:	AA 145-194
Reactivity:	Human
Host:	Rabbit
Clonality:	Polyclonal
Conjugate:	This SH2D4A antibody is un-conjugated
Application:	Western Blotting (WB), Immunohistochemistry (IHC), Immunohistochemistry (Paraffin-embedded Sections) (IHC (p))

Product Details

Brand:	IHC-plus™
Immunogen:	Synthetic peptide located between aa145-194 of human SH2D4A (Q9H788, NP_071354). Percent identity by BLAST analysis: Human, Chimpanzee, Orangutan, Gibbon (100%), Monkey (84%). Type of Immunogen: Synthetic peptide
Specificity:	Human SH2D4A
Predicted Reactivity:	Percent identity by BLAST analysis:
Purification:	Immunoaffinity purified

Target Details

Target:	SH2D4A
Alternative Name:	SH2D4A (SH2D4A Products)
Background:	Name/Gene ID: SH2D4A Synonyms: SH2D4A, Protein SH(2)A, SH2A, SH2 domain containing 4A, PPP1R38
Gene ID:	63898
NCBI Accession:	NP_071354
UniProt:	Q9H788

Application Details

Application Notes:	Approved: IHC, IHC-P (5 - 10 µg/mL), WB
Comment:	Target Species of Antibody: Human
Restrictions:	For Research Use only

Handling

Format:	Lyophilized
Reconstitution:	Distilled water
Concentration:	Lot specific
Buffer:	Lyophilized from PBS with 2 % sucrose
Handling Advice:	Avoid repeat freeze-thaw cycles.
Storage:	4 °C, -20 °C
Storage Comment:	Long term: -20°C, the use of 50% glycerol is recommended if storing aliquots in -20°C for long term use (up to 1 year) Short term (less than 1 week): 4°C. Avoid freeze-thaw cycles.

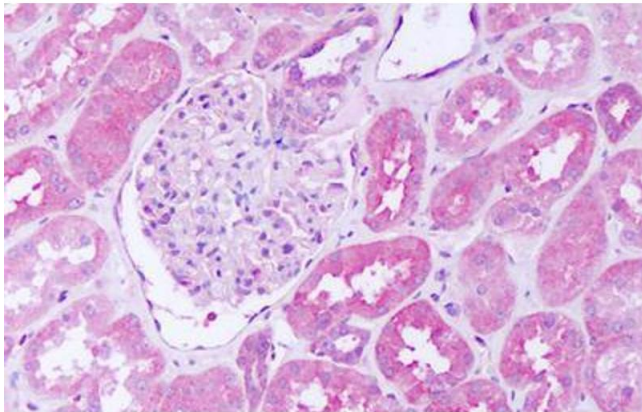
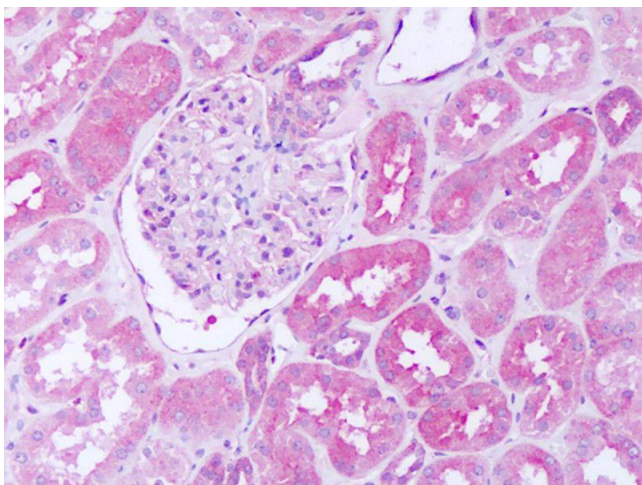


Image 1.



Immunohistochemistry

Image 2. Anti-SH2D4A antibody IHC of human kidney. Immunohistochemistry of formalin-fixed, paraffin-embedded tissue after heat-induced antigen retrieval. Antibody dilution 5-10 ug/ml. This image was taken for the unconjugated form of this product. Other form ...