



[Go to Product page](#)

Datasheet for ABIN6749797  
**anti-KTI12 antibody (AA 170-219)**

2 Images

Overview

Quantity:	100 µL
Target:	KTI12
Binding Specificity:	AA 170-219
Reactivity:	Human
Host:	Rabbit
Clonality:	Polyclonal
Conjugate:	This KTI12 antibody is un-conjugated
Application:	Western Blotting (WB), Immunohistochemistry (IHC), Immunohistochemistry (Paraffin-embedded Sections) (IHC (p))

Product Details

Brand:	IHC-plus™
Immunogen:	Synthetic peptide located between aa170-219 of human KTI12 (Q96EK9, NP_612426). Percent identity by BLAST analysis: Human, Gorilla (100%), Monkey (92%).  Type of Immunogen: Synthetic peptide
Specificity:	Human
Predicted Reactivity:	Percent identity by BLAST analysis:
Purification:	Immunoaffinity purified

## Target Details

---

Target: KTI12

Alternative Name: KTI12 ([KTI12 Products](#))

Background: Name/Gene ID: KTI12

Synonyms: KTI12, Protein KTI12 homolog, SBBI81, RP11-91A18.3, TOT4

Gene ID: 112970

NCBI Accession: [NP\\_612426](#)

UniProt: [Q96EK9](#)

## Application Details

---

Application Notes: Approved: IHC, IHC-P (5 - 10 µg/mL), WB

Comment: Target Species of Antibody: Human

Restrictions: For Research Use only

## Handling

---

Format: Lyophilized

Reconstitution: Distilled water

Concentration: Lot specific

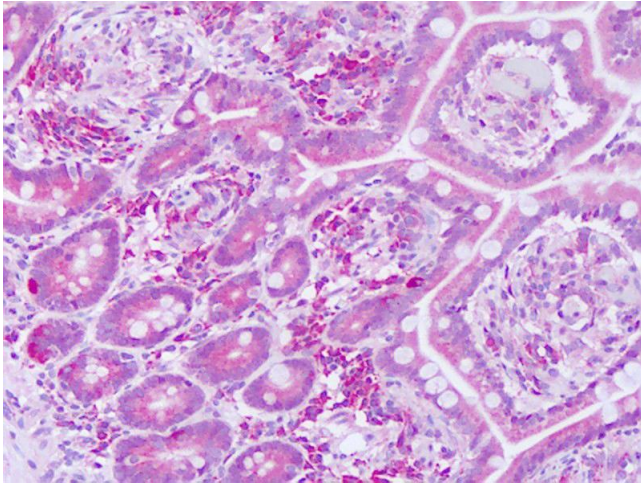
Buffer: Lyophilized from PBS with 2 % sucrose

Handling Advice: Avoid repeat freeze-thaw cycles.

Storage: 4 °C, -20 °C

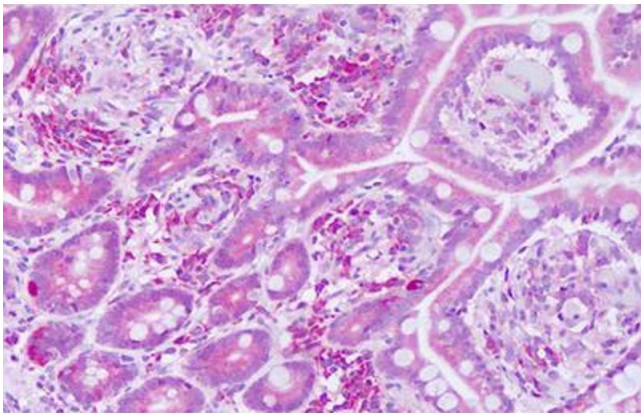
Storage Comment: Long term: -20°C, the use of 50% glycerol is recommended if storing aliquots in -20°C for long term use (up to 1 year)

Short term (less than 1 week): 4°C. Avoid freeze-thaw cycles.



### Immunohistochemistry

**Image 1.** Anti-KTI12 antibody IHC of human testis. Immunohistochemistry of formalin-fixed, paraffin-embedded tissue after heat-induced antigen retrieval. Antibody dilution 5-10 ug/ml. This image was taken for the unconjugated form of this product. Other forms ...



**Image 2.**