



[Go to Product page](#)

Datasheet for ABIN6749810  
**anti-CBFB antibody (N-Term)**

1 Image

Overview

Quantity:	100 µL
Target:	CBFB
Binding Specificity:	N-Term
Reactivity:	Human, Mouse, Rat, Zebrafish (Danio rerio), Cow, Pig, Rabbit, Dog, Monkey
Host:	Rabbit
Clonality:	Polyclonal
Conjugate:	This CBFB antibody is un-conjugated
Application:	Western Blotting (WB)

Product Details

Immunogen:	Synthetic peptide from N-Terminus of human CBFB (Q13951, NP_001746). Percent identity by BLAST analysis: Human, Chimpanzee, Gorilla, Orangutan, Gibbon, Monkey, Galago, Marmoset, Mouse, Rat, Dog, Bovine, Rabbit, Pig, Lizard, Medaka, Salmon, Pufferfish, Zebrafish (100%), Opossum, Xenopus, Stickleback (92%).  Type of Immunogen: Synthetic peptide
Specificity:	Human CBFB
Predicted Reactivity:	Percent identity by BLAST analysis: Human, Mouse, Rat, Zebrafish, Salmon (100%).
Purification:	Immunoaffinity purified

## Target Details

---

Target:	CBFB
Alternative Name:	CBFB ( <a href="#">CBFB Products</a> )
Background:	Name/Gene ID: CBFB  Synonyms: CBFB, CBF-beta, PEBP2-beta, PEA2-beta, PEBP2B
Gene ID:	865
NCBI Accession:	<a href="#">NP_001746</a>
UniProt:	<a href="#">Q13951</a>
Pathways:	<a href="#">Regulation of Lipid Metabolism by PPARalpha</a>

## Application Details

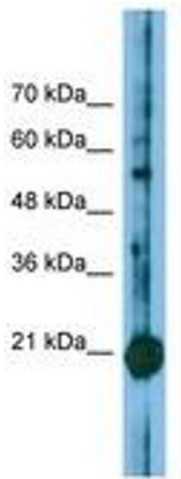
---

Application Notes:	Optimal working dilution should be determined by the investigator.
Comment:	Target Species of Antibody: Human
Restrictions:	For Research Use only

## Handling

---

Format:	Lyophilized
Reconstitution:	Distilled water
Concentration:	Lot specific
Buffer:	Lyophilized from PBS
Storage:	4 °C, -20 °C
Storage Comment:	Long term: -20°C, the use of 50% glycerol is recommended if storing aliquots in -20°C for long term use (up to 1 year)  Short term (less than 1 week): 4°C. Avoid freeze-thaw cycles.



Host: Rabbit  
Target Name: CBFβ  
Sample Tissue: Jurkat Cell Lysate  
Antibody Dilution: 1.0µg/ml

Image 1.