



[Go to Product page](#)

Datasheet for ABIN6749813
anti-LMO1 antibody (C-Term)

1 Image

Overview

Quantity:	100 µL
Target:	LMO1
Binding Specificity:	C-Term
Reactivity:	Human, Rat, Guinea Pig, Horse, Dog, Monkey
Host:	Rabbit
Clonality:	Polyclonal
Conjugate:	This LMO1 antibody is un-conjugated
Application:	Western Blotting (WB)

Product Details

Immunogen:	Synthetic peptide from C-Terminus of rat Lmo1 (D4A8W2, NP_620812). Percent identity by BLAST analysis: Human, Chimpanzee, Gorilla, Orangutan, Gibbon, Monkey, Galago, Marmoset, Rat, Elephant, Panda, Dog, Horse, Guinea pig (100%), Mouse, Bat, Opossum, Turkey, Zebra finch, Chicken (92%), Bovine, Rabbit, Lizard, Xenopus, Salmon, Stickleback, Medaka, Pufferfish, Zebrafish (85%). Type of Immunogen: Synthetic peptide
Specificity:	Rat LMO1
Predicted Reactivity:	Percent identity by BLAST analysis: Human, Chimpanzee, Monkey (100%) Mouse, Rat, Zebra finch (92%) Bovine, Xenopus, Salmon, Zebrafish (85%).
Purification:	Immunoaffinity purified

Target Details

Target:	LMO1
Alternative Name:	LMO1 (LMO1 Products)
Background:	Name/Gene ID: LMO1 Synonyms: LMO1, Cysteine-rich protein TTG-1, LIM domain only protein 1, LMO-1, RBTN1, RHOM1, Rhombotin-1, T-cell translocation protein 1, T-cell translocation gene 1, TTG1
Gene ID:	4004
NCBI Accession:	NP_620812
UniProt:	P25800
Pathways:	Dopaminergic Neurogenesis

Application Details

Application Notes:	Optimal working dilution should be determined by the investigator.
Comment:	Target Species of Antibody: Rat
Restrictions:	For Research Use only

Handling

Format:	Lyophilized
Reconstitution:	Distilled water
Concentration:	Lot specific
Buffer:	Lyophilized from PBS
Storage:	4 °C,-20 °C
Storage Comment:	Long term: -20°C, the use of 50% glycerol is recommended if storing aliquots in -20°C for long term use (up to 1 year) Short term (less than 1 week): 4°C. Avoid freeze-thaw cycles.

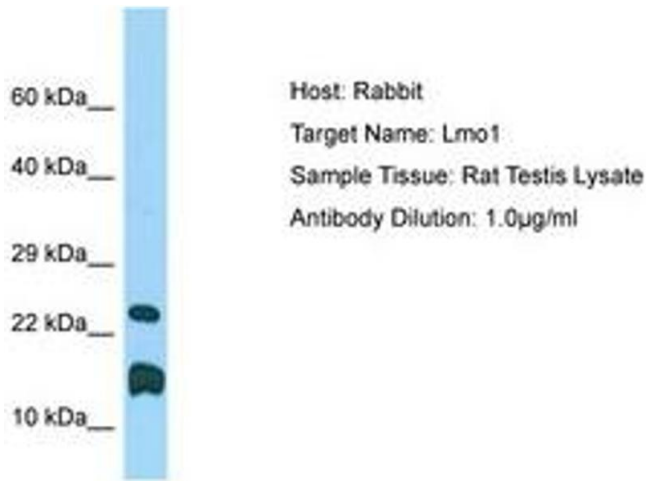


Image 1.