



[Go to Product page](#)

Datasheet for ABIN6749814
anti-HLF antibody (N-Term)

1 Image

Overview

Quantity:	100 µL
Target:	HLF
Binding Specificity:	N-Term
Reactivity:	Human, Mouse, Rat, Dog, Pig, Monkey
Host:	Rabbit
Clonality:	Polyclonal
Conjugate:	This HLF antibody is un-conjugated
Application:	Western Blotting (WB)

Product Details

Immunogen:	Synthetic peptide from N-Terminus of mouse Hlf (Q8BW74, NP_766151). Percent identity by BLAST analysis: Human, Chimpanzee, Gorilla, Orangutan, Gibbon, Marmoset, Mouse, Rat, Elephant, Panda, Dog, Pig (100%), Guinea pig (92%), Horse (91%), Galago, Bat, Chicken, Lizard (85%), Rabbit, Zebra finch (83%). Type of Immunogen: Synthetic peptide
Specificity:	Mouse HLF
Predicted Reactivity:	Percent identity by BLAST analysis: Human, Panda (100%) Mouse, Rat (85%).
Purification:	Immunoaffinity purified

Target Details

Target:	HLF
Alternative Name:	HLF (HLF Products)
Background:	Name/Gene ID: HLF Synonyms: HLF, Hepatic leukemia factor
Gene ID:	3131
NCBI Accession:	NP_766151
UniProt:	Q16534

Application Details

Application Notes:	Optimal working dilution should be determined by the investigator.
Comment:	Target Species of Antibody: Mouse
Restrictions:	For Research Use only

Handling

Format:	Lyophilized
Reconstitution:	Distilled water
Concentration:	Lot specific
Buffer:	Lyophilized from PBS
Storage:	4 °C,-20 °C
Storage Comment:	Long term: -20°C, the use of 50% glycerol is recommended if storing aliquots in -20°C for long term use (up to 1 year) Short term (less than 1 week): 4°C. Avoid freeze-thaw cycles.

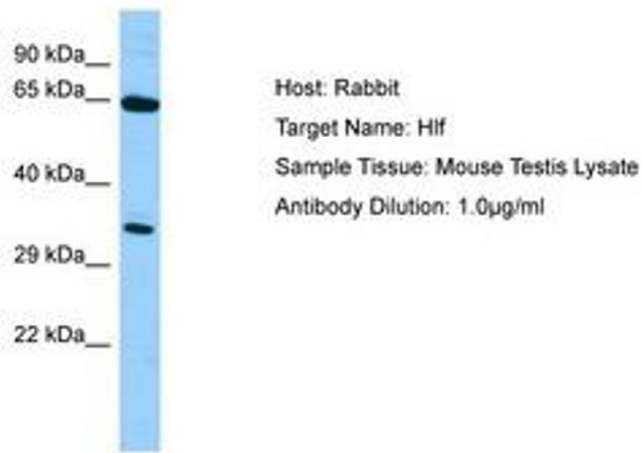


Image 1.