



Datasheet for ABIN6749822
anti-Zfp982 antibody (N-Term)



[Go to Product page](#)

1 Image

Overview

Quantity:	100 µL
Target:	Zfp982
Binding Specificity:	N-Term
Reactivity:	Human, Mouse, Monkey
Host:	Rabbit
Clonality:	Polyclonal
Conjugate:	This Zfp982 antibody is un-conjugated
Application:	Western Blotting (WB)

Product Details

Immunogen:	Synthetic peptide from N-Terminus of mouse Gm13152 (Q6PDN1, NP_001034298). Percent identity by BLAST analysis: Human, Chimpanzee, Gorilla, Orangutan, Gibbon, Monkey, Marmoset, Mouse (100%), Galago, Dog, Bovine, Horse, Pig (92%). Type of Immunogen: Synthetic peptide
Specificity:	Mouse Gm13152
Predicted Reactivity:	Percent identity by BLAST analysis: Human (100%) Bovine (92%) Mouse (85%).
Purification:	Immunoaffinity purified

Target Details

Target:	Zfp982
---------	--------

Target Details

Alternative Name: Gm13152 ([Zfp982 Products](#))

Background: Name/Gene ID: Gm13152

Synonyms: Gm13152, OTTMUSG00000010671, Predicted gene 13152

Gene ID: 195531

NCBI Accession: [NP_001034298](#)

Application Details

Application Notes: Optimal working dilution should be determined by the investigator.

Comment: Target Species of Antibody: Mouse

Restrictions: For Research Use only

Handling

Format: Lyophilized

Reconstitution: Distilled water

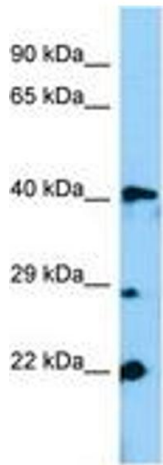
Concentration: Lot specific

Buffer: Lyophilized from PBS

Storage: 4 °C, -20 °C

Storage Comment: Long term: -20°C, the use of 50% glycerol is recommended if storing aliquots in -20°C for long term use (up to 1 year)

Short term (less than 1 week): 4°C. Avoid freeze-thaw cycles.



Host: Rabbit
Target Name: Gm13152
Sample Tissue: Mouse Lung Lysate
Antibody Dilution: 1.0µg/ml

Image 1.