



[Go to Product page](#)

Datasheet for ABIN6749826
anti-WNT8B antibody (AA 251-300)

1 Image

Overview

Quantity:	100 µL
Target:	WNT8B
Binding Specificity:	AA 251-300
Reactivity:	Human, Mouse, Rat, Dog, Rabbit, Cow, Horse, Pig, Bat
Host:	Rabbit
Clonality:	Polyclonal
Conjugate:	This WNT8B antibody is un-conjugated
Application:	Western Blotting (WB)

Product Details

Immunogen:	Synthetic peptide located between aa251-300 of mouse Wnt8b (Q9WUD6, NP_035850). Percent identity by BLAST analysis: Human, Chimpanzee, Gorilla, Orangutan, Gibbon, Monkey, Galago, Mouse, Rat, Elephant, Panda, Dog, Bovine, Bat, Rabbit, Horse, Pig, Platypus (100%), Marmoset, Opossum, Guinea pig (92%). Type of Immunogen: Synthetic peptide
Specificity:	Mouse WNT8B / Wnt 8b
Predicted Reactivity:	Percent identity by BLAST analysis: Human, Mouse, Rat (100%).
Purification:	Immunoaffinity purified

Target Details

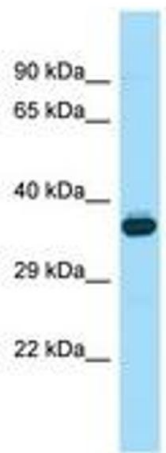
Target:	WNT8B
Alternative Name:	WNT8B / Wnt 8b (WNT8B Products)
Background:	Name/Gene ID: WNT8B Family: WNT Synonyms: WNT8B, Protein Wnt-8b, WNT 8b
Gene ID:	7479
NCBI Accession:	NP_035850
UniProt:	Q93098
Pathways:	WNT Signaling

Application Details

Application Notes:	Optimal working dilution should be determined by the investigator.
Comment:	Target Species of Antibody: Mouse
Restrictions:	For Research Use only

Handling

Format:	Lyophilized
Reconstitution:	Distilled water
Concentration:	Lot specific
Buffer:	Lyophilized from PBS
Storage:	4 °C,-20 °C
Storage Comment:	Long term: -20°C, the use of 50% glycerol is recommended if storing aliquots in -20°C for long term use (up to 1 year) Short term (less than 1 week): 4°C. Avoid freeze-thaw cycles.



Host: Rabbit
Target Name: Wnt8b
Sample Tissue: Mouse Testis Lysate
Antibody Dilution: 1.0µg/ml

Image 1.