

Datasheet for ABIN6749829
anti-C14orf101 antibody (AA 201-250)



[Go to Product page](#)

1 Image

Overview

Quantity:	100 µL
Target:	C14orf101
Binding Specificity:	AA 201-250
Reactivity:	Human, Mouse
Host:	Rabbit
Clonality:	Polyclonal
Conjugate:	This C14orf101 antibody is un-conjugated
Application:	Western Blotting (WB)

Product Details

Immunogen:	Synthetic peptide located between aa201-250 of mouse Tmem260 (NP_766188). Percent identity by BLAST analysis: Human, Chimpanzee, Gorilla, Orangutan, Gibbon, Galago, Marmoset, Mouse, Elephant (100%), Monkey, Panda (92%), Rat, Dog, Bat, Rabbit, Horse, Pig (85%). Type of Immunogen: Synthetic peptide
Specificity:	Mouse 6720456H20Rik
Predicted Reactivity:	Percent identity by BLAST analysis: Human (100%) Rat (85%).
Purification:	Immunoaffinity purified

Target Details

Target:	C14orf101
---------	-----------

Target Details

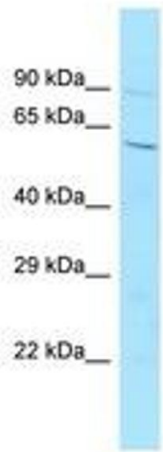
Alternative Name:	TMEM260 / C14orf101 (C14orf101 Products)
Background:	Name/Gene ID: TMEM260 Synonyms: TMEM260, 5930435P15, C14orf101, UPF0679 protein C14orf101, RIKEN cDNA 6720456H20 gene
Gene ID:	54916
NCBI Accession:	NP_766188
UniProt:	Q8BMD6

Application Details

Application Notes:	Optimal working dilution should be determined by the investigator.
Comment:	Target Species of Antibody: Mouse
Restrictions:	For Research Use only

Handling

Format:	Lyophilized
Reconstitution:	Distilled water
Concentration:	Lot specific
Buffer:	Lyophilized from PBS
Storage:	4 °C,-20 °C
Storage Comment:	Long term: -20°C, the use of 50% glycerol is recommended if storing aliquots in -20°C for long term use (up to 1 year) Short term (less than 1 week): 4°C. Avoid freeze-thaw cycles.



Host: Rabbit
Target Name: 6720456H20Rik
Sample Tissue: Mouse Testis Lysate
Antibody Dilution: 1.0µg/ml

Image 1.