



[Go to Product page](#)

Datasheet for ABIN6749831
anti-ERGIC2 antibody (N-Term)

1 Image

Overview

| | |
|----------------------|---|
| Quantity: | 100 µL |
| Target: | ERGIC2 |
| Binding Specificity: | N-Term |
| Reactivity: | Human, Mouse, Rat, Rabbit, Dog, Cow, Pig, Bat, Monkey, Xenopus laevis |
| Host: | Rabbit |
| Clonality: | Polyclonal |
| Conjugate: | This ERGIC2 antibody is un-conjugated |
| Application: | Western Blotting (WB) |

Product Details

| | |
|-----------------------|---|
| Immunogen: | Synthetic peptide from N-Terminus of mouse Ergic2 (NP_080631). Percent identity by BLAST analysis: Human, Gorilla, Orangutan, Gibbon, Monkey, Galago, Mouse, Rat, Panda, Dog, Bovine, Bat, Rabbit, Pig, Platypus, Xenopus (100%), Elephant, Horse, Guinea pig, Pike (92%), Opossum (91%), Turkey, Zebra finch, Chicken, Lizard, Salmon (84%). Type of Immunogen: Synthetic peptide |
| Specificity: | Mouse ERGIC2 |
| Predicted Reactivity: | Percent identity by BLAST analysis: Human, Monkey, Mouse, Rat, Bovine, Xenopus (100%) Pike (92%) Salmon (84%). |
| Purification: | Immunoaffinity purified |

Target Details

Target: ERGIC2

Alternative Name: ERGIC2 ([ERGIC2 Products](#))

Background: Name/Gene ID: ERGIC2

Synonyms: ERGIC2, CD14 protein, Erv41, Cd002, CDA14, ERGIC and golgi 2, PTX1

Gene ID: 51290

NCBI Accession: [NP_080631](#)

UniProt: [Q96RQ1](#)

Application Details

Application Notes: Optimal working dilution should be determined by the investigator.

Comment: Target Species of Antibody: Mouse

Restrictions: For Research Use only

Handling

Format: Lyophilized

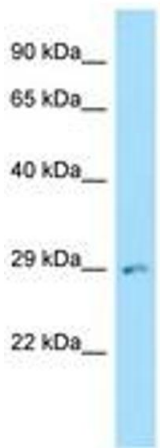
Reconstitution: Distilled water

Concentration: Lot specific

Buffer: Lyophilized from PBS

Storage: 4 °C, -20 °C

Storage Comment: Long term: -20°C, the use of 50% glycerol is recommended if storing aliquots in -20°C for long term use (up to 1 year)
Short term (less than 1 week): 4°C. Avoid freeze-thaw cycles.



Host: Rabbit
Target Name: Ergic2
Sample Tissue: Mouse Muscle Lysate
Antibody Dilution: 1.0µg/ml

Image 1.