



Datasheet for ABIN6749858  
**anti-PRRX1 antibody (C-Term)**



[Go to Product page](#)

1 Image

Overview

Quantity:	100 µL
Target:	PRRX1
Binding Specificity:	C-Term
Reactivity:	Human, Mouse, Rat, Cow, Rabbit, Dog, Chicken, Guinea Pig, Xenopus laevis, Bat, Monkey
Host:	Rabbit
Clonality:	Polyclonal
Conjugate:	This PRRX1 antibody is un-conjugated
Application:	Western Blotting (WB)

Product Details

Immunogen:	Synthetic peptide from C-Terminus of rat Prrx1 (P63014, NP_722543). Percent identity by BLAST analysis: Human, Chimpanzee, Gorilla, Orangutan, Gibbon, Monkey, Galago, Marmoset, Mouse, Rat, Elephant, Panda, Dog, Bovine, Bat, Rabbit, Opossum, Guinea pig, Turkey, Chicken, Platypus, Xenopus (100%), Stickleback, Medaka, Pufferfish, Zebrafish (85%).  Type of Immunogen: Synthetic peptide
Specificity:	Rat PRX-1 / PRRX1
Predicted Reactivity:	Percent identity by BLAST analysis: Human, Mouse, Rat, Panda, Bovine, Chicken (100%) Zebrafish (85%).
Purification:	Immunoaffinity purified

## Target Details

---

Target:	PRRX1
Alternative Name:	PRX-1 / PRRX1 ( <a href="#">PRRX1 Products</a> )
Background:	Name/Gene ID: PRRX1  Synonyms: PRRX1, AGOTC, Homeobox protein PHOX1, Paired related homeobox 1, PHOX1, PRX1, Paired mesoderm homeo box 1, PRX-1, PMX1
Gene ID:	5396
NCBI Accession:	<a href="#">NP_722543</a>

## Application Details

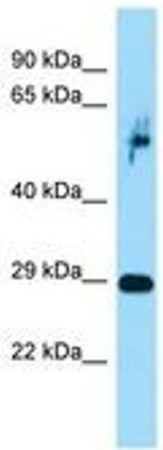
---

Application Notes:	Optimal working dilution should be determined by the investigator.
Comment:	Target Species of Antibody: Rat
Restrictions:	For Research Use only

## Handling

---

Format:	Lyophilized
Reconstitution:	Distilled water
Concentration:	Lot specific
Buffer:	Lyophilized from PBS
Handling Advice:	Avoid repeat freeze-thaw cycles.
Storage:	4 °C, -20 °C
Storage Comment:	Long term: -20°C, the use of 50% glycerol is recommended if storing aliquots in -20°C for long term use (up to 1 year) Short term (less than 1 week): 4°C. Avoid freeze-thaw cycles.



Host: Rabbit  
Target Name: Prrx1  
Sample Tissue: Rat Pancreas Lysate  
Antibody Dilution: 1.0µg/ml

Image 1.