



[Go to Product page](#)

Datasheet for ABIN6749859
anti-TUT1 antibody (N-Term)

1 Image

Overview

Quantity:	100 µL
Target:	TUT1
Binding Specificity:	N-Term
Reactivity:	Human, Mouse, Dog, Guinea Pig, Rat, Monkey, Pig
Host:	Rabbit
Clonality:	Polyclonal
Conjugate:	This TUT1 antibody is un-conjugated
Application:	Western Blotting (WB)

Product Details

Immunogen:	Synthetic peptide from N-Terminus of rat Tut1 (Q3MHT4, NP_001029073). Percent identity by BLAST analysis: Human, Chimpanzee, Gorilla, Orangutan, Marmoset, Mouse, Rat, Elephant, Panda, Dog, Pig, Guinea pig, Platypus (100%), Bovine, Horse (92%), Opossum (85%). Type of Immunogen: Synthetic peptide
Specificity:	Rat TUT1
Predicted Reactivity:	Percent identity by BLAST analysis: Human, Panda (100%) Mouse, Rat, Bovine (92%).
Purification:	Immunoaffinity purified

Target Details

Target:	TUT1
---------	------

Target Details

Alternative Name: [TUT1 \(TUT1 Products\)](#)

Background: Name/Gene ID: TUT1

Synonyms: TUT1, RNA binding motif protein 21, RNA-binding protein 21, STARPAP, U6 TUTase, U6-TUTase, RBM21, RNA uridylyltransferase, PAPD2, RNA-binding motif protein 21, Star-PAP, TUTase

Gene ID: 64852

NCBI Accession: [NP_001029073](#)

UniProt: [Q9H6E5](#)

Application Details

Application Notes: Optimal working dilution should be determined by the investigator.

Comment: Target Species of Antibody: Rat

Restrictions: For Research Use only

Handling

Format: Lyophilized

Reconstitution: Distilled water

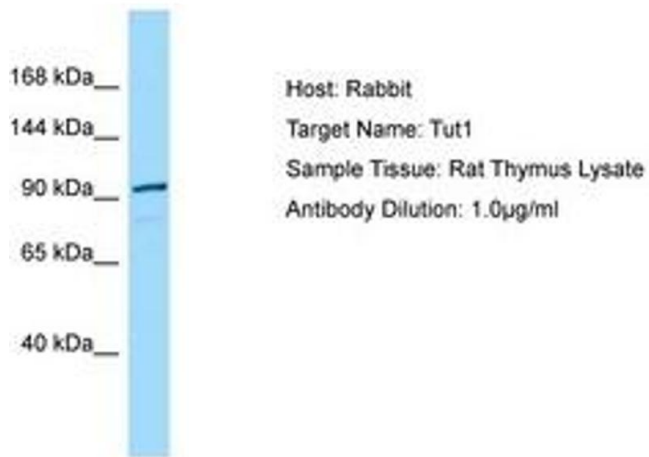
Concentration: Lot specific

Buffer: Lyophilized from PBS

Storage: 4 °C, -20 °C

Storage Comment: Long term: -20°C, the use of 50% glycerol is recommended if storing aliquots in -20°C for long term use (up to 1 year)

Short term (less than 1 week): 4°C. Avoid freeze-thaw cycles.



Host: Rabbit
Target Name: Tut1
Sample Tissue: Rat Thymus Lysate
Antibody Dilution: 1.0µg/ml

Image 1.