



Datasheet for ABIN6749863
anti-DMBX1 antibody (C-Term)



[Go to Product page](#)

1 Image

Overview

Quantity:	100 µL
Target:	DMBX1
Binding Specificity:	C-Term
Reactivity:	Human, Rat, Mouse, Guinea Pig, Rabbit, Cow, Horse, Chicken, Zebrafish (Danio rerio), Bat, Monkey, Pig, Xenopus laevis
Host:	Rabbit
Clonality:	Polyclonal
Conjugate:	This DMXB1 antibody is un-conjugated
Application:	Western Blotting (WB)

Product Details

Immunogen:	Synthetic peptide from C-Terminus of mouse Dmbx1 (Q91ZK4, NP_570935). Percent identity by BLAST analysis: Human, Chimpanzee, Gorilla, Orangutan, Gibbon, Monkey, Galago, Tamarin, Mouse, Rat, Elephant, Panda, Bovine, Bat, Rabbit, Horse, Pig, Guinea pig, Turkey, Zebra finch, Chicken, Platypus, Xenopus, Pufferfish, Zebrafish (100%), Dog (92%), Opossum (85%). Type of Immunogen: Synthetic peptide
Specificity:	Mouse DMXB1
Predicted Reactivity:	Percent identity by BLAST analysis: Human, Monkey, Mouse, Rat, Panda, Zebrafish (100%).
Purification:	Immunoaffinity purified

Target Details

Target:	DMBX1
Alternative Name:	DMBX1 / OTX3 (DMBX1 Products)
Background:	Name/Gene ID: DMBX1 Synonyms: DMBX1, Homeoprotein MBX, OTX3, MBX, Orthodenticle homolog 3, PAXB
Gene ID:	127343
NCBI Accession:	NP_570935
UniProt:	Q8NFW5
Pathways:	Feeding Behaviour

Application Details

Application Notes:	Optimal working dilution should be determined by the investigator.
Comment:	Target Species of Antibody: Mouse
Restrictions:	For Research Use only

Handling

Format:	Lyophilized
Reconstitution:	Distilled water
Concentration:	Lot specific
Buffer:	Lyophilized from PBS
Storage:	4 °C, -20 °C
Storage Comment:	Long term: -20°C, the use of 50% glycerol is recommended if storing aliquots in -20°C for long term use (up to 1 year) Short term (less than 1 week): 4°C. Avoid freeze-thaw cycles.

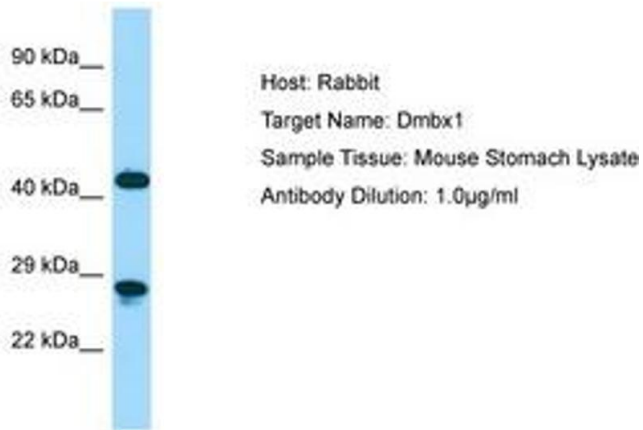


Image 1.