



[Go to Product page](#)

Datasheet for ABIN6749876

## anti-**PLEKHA6** antibody (AA 176-225)

### 1 Image

#### Overview

Quantity:	100 µL
Target:	PLEKHA6
Binding Specificity:	AA 176-225
Reactivity:	Human, Rat
Host:	Rabbit
Clonality:	Polyclonal
Conjugate:	This PLEKHA6 antibody is un-conjugated
Application:	Western Blotting (WB)

#### Product Details

Immunogen:	Synthetic peptide located between aa176-225 of rat Plekha6. Percent identity by BLAST analysis: Rat (100%).  Type of Immunogen: Synthetic peptide
Specificity:	Rat PEPP3 / PLEKHA6
Purification:	Immunoaffinity purified

#### Target Details

Target:	PLEKHA6
Alternative Name:	PLEKHA6 ( <a href="#">PLEKHA6 Products</a> )
Background:	Name/Gene ID: PLEKHA6

## Target Details

---

Synonyms: PLEKHA6, KIAA0969, PEPP3, PEPP-3

Gene ID: 22874

UniProt: [Q9Y2H5](#)

## Application Details

---

Application Notes: Optimal working dilution should be determined by the investigator.

Comment: Target Species of Antibody: Rat

Restrictions: For Research Use only

## Handling

---

Format: Lyophilized

Reconstitution: Distilled water

Concentration: Lot specific

Buffer: Lyophilized from PBS

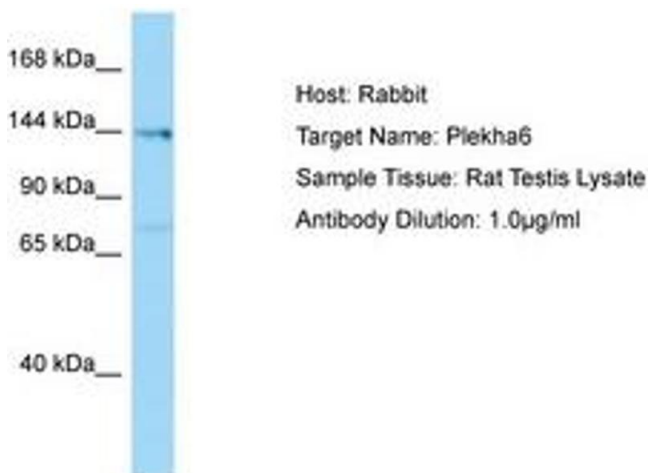
Storage: 4 °C, -20 °C

Storage Comment: Long term: -20°C, the use of 50% glycerol is recommended if storing aliquots in -20°C for long term use (up to 1 year)

Short term (less than 1 week): 4°C. Avoid freeze-thaw cycles.

## Images

---



**Image 1.**