



[Go to Product page](#)

Datasheet for ABIN6749888
anti-RAB19 antibody (AA 40-89)

1 Image

Overview

Quantity:	100 µL
Target:	RAB19
Binding Specificity:	AA 40-89
Reactivity:	Human, Mouse, Rat, Horse, Rabbit, Cow, Dog, Guinea Pig, Monkey, Pig, Bat
Host:	Rabbit
Clonality:	Polyclonal
Conjugate:	This RAB19 antibody is un-conjugated
Application:	Western Blotting (WB)

Product Details

Immunogen:	Synthetic peptide located between aa40-89 of human RAB19 (NP_001008749). Percent identity by BLAST analysis: Human, Chimpanzee, Gorilla, Monkey, Marmoset, Mouse, Rat, Elephant, Panda, Dog, Bovine, Bat, Rabbit, Horse, Pig, Opossum, Guinea pig (100%), Turkey, Chicken, Xenopus, Stickleback, Medaka, Pufferfish, Zebrafish, Paramecium (92%), Orangutan, Gibbon, Galago, Goat, Zebra finch, Lizard (85%). Type of Immunogen: Synthetic peptide
Specificity:	Human RAB19
Predicted Reactivity:	Percent identity by BLAST analysis: Human, Mouse, Rat, Bovine (100%) Zebrafish (92%) Panda (85%).
Purification:	Immunoaffinity purified

Target Details

Target: RAB19

Alternative Name: RAB19 ([RAB19 Products](#))

Background: Name/Gene ID: RAB19

Synonyms: RAB19, GTP-binding protein RAB19B, RAB19B, Ras-related protein Rab-19

Gene ID: 401409

NCBI Accession: [NP_001008749](#)

UniProt: [A4D1S5](#)

Application Details

Application Notes: Optimal working dilution should be determined by the investigator.

Comment: Target Species of Antibody: Human

Restrictions: For Research Use only

Handling

Format: Lyophilized

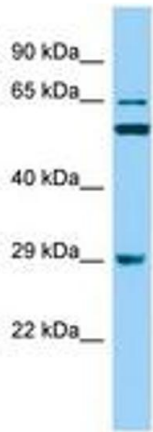
Reconstitution: Distilled water

Concentration: Lot specific

Buffer: Lyophilized from PBS

Storage: 4 °C, -20 °C

Storage Comment: Long term: -20°C, the use of 50% glycerol is recommended if storing aliquots in -20°C for long term use (up to 1 year)
Short term (less than 1 week): 4°C. Avoid freeze-thaw cycles.



Host: Rabbit
Target Name: RAB19
Sample Tissue: RPMI-8226 Cell Lysate
Antibody Dilution: 1.0µg/ml

Image 1.