



## Datasheet for ABIN6749889 **anti-RINL antibody (AA 62-111)**



[Go to Product page](#)

### 1 Image

#### Overview

Quantity:	100 µL
Target:	RINL
Binding Specificity:	AA 62-111
Reactivity:	Human
Host:	Rabbit
Clonality:	Polyclonal
Conjugate:	This RINL antibody is un-conjugated
Application:	Western Blotting (WB)

#### Product Details

Immunogen:	Synthetic peptide located between aa62-111 of human RINL (Q6ZS11, NP_940847). Percent identity by BLAST analysis: Human, Chimpanzee, Gorilla, Orangutan, Gibbon (100%), Monkey (92%), Marmoset (84%).  Type of Immunogen: Synthetic peptide
Specificity:	Human RINL
Predicted Reactivity:	Percent identity by BLAST analysis: Human (100%).
Purification:	Immunoaffinity purified

#### Target Details

Target:	RINL
---------	------

## Target Details

---

Alternative Name: RINL ([RINL Products](#))

Background: Name/Gene ID: RINL

Synonyms: RINL, Ras and Rab interactor-like

Gene ID: 126432

NCBI Accession: [NP\\_940847](#)

UniProt: [Q6ZS11](#)

## Application Details

---

Application Notes: Optimal working dilution should be determined by the investigator.

Comment: Target Species of Antibody: Human

Restrictions: For Research Use only

## Handling

---

Format: Lyophilized

Reconstitution: Distilled water

Concentration: Lot specific

Buffer: Lyophilized from PBS

Storage: 4 °C, -20 °C

Storage Comment: Long term: -20°C, the use of 50% glycerol is recommended if storing aliquots in -20°C for long term use (up to 1 year)

Short term (less than 1 week): 4°C. Avoid freeze-thaw cycles.

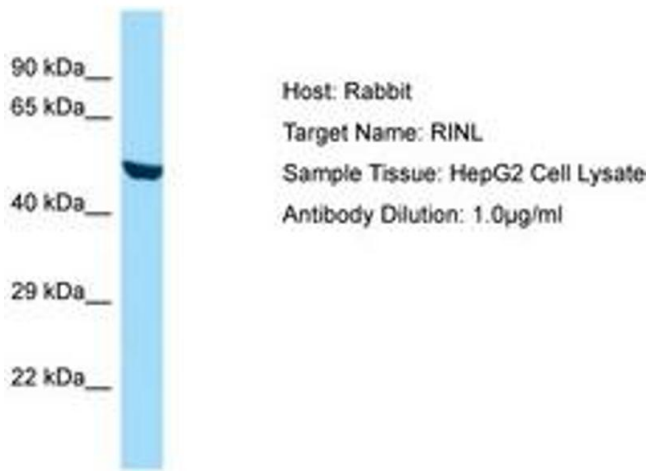


Image 1.