



Datasheet for ABIN6749891
anti-RPL36AL antibody (C-Term)



[Go to Product page](#)

1 Image

Overview

Quantity:	100 µL
Target:	RPL36AL
Binding Specificity:	C-Term
Reactivity:	Human, Mouse, Rat, Cow, Guinea Pig, Horse, Rabbit, Pig
Host:	Rabbit
Clonality:	Polyclonal
Conjugate:	This RPL36AL antibody is un-conjugated
Application:	Western Blotting (WB)

Product Details

Immunogen:	Synthetic peptide from C-Terminus of human RPL36AL (Q969Q0, NP_000992). Percent identity by BLAST analysis: Human, Chimpanzee, Mouse, Rat, Bovine, Rabbit, Horse, Pig, Guinea pig (100%). Type of Immunogen: Synthetic peptide
Specificity:	Human RPL36AL
Purification:	Immunoaffinity purified

Target Details

Target:	RPL36AL
Alternative Name:	RPL36AL (RPL36AL Products)

Target Details

Background:	Name/Gene ID: RPL36AL Synonyms: RPL36AL, 60S ribosomal protein L36a, Ribosomal protein HL44, Ribosomal protein L36a-like, Ribosomal protein L36a
Gene ID:	6166
NCBI Accession:	NP_000992
UniProt:	Q969Q0

Application Details

Application Notes:	Optimal working dilution should be determined by the investigator.
Comment:	Target Species of Antibody: Human
Restrictions:	For Research Use only

Handling

Format:	Lyophilized
Reconstitution:	Distilled water
Concentration:	Lot specific
Buffer:	Lyophilized from PBS
Storage:	4 °C, -20 °C
Storage Comment:	Long term: -20°C, the use of 50% glycerol is recommended if storing aliquots in -20°C for long term use (up to 1 year) Short term (less than 1 week): 4°C. Avoid freeze-thaw cycles.

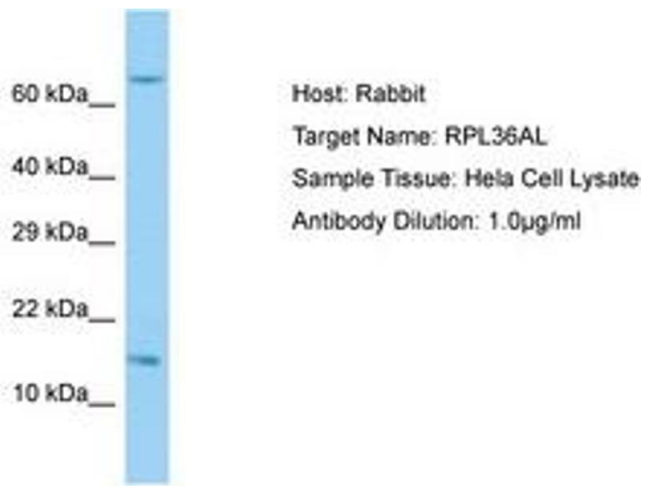


Image 1.