



[Go to Product page](#)

Datasheet for ABIN6749894
anti-RSPH9 antibody (AA 99-148)

1 Image

Overview

Quantity:	100 µL
Target:	RSPH9
Binding Specificity:	AA 99-148
Reactivity:	Human, Pig, Cow, Monkey
Host:	Rabbit
Clonality:	Polyclonal
Conjugate:	This RSPH9 antibody is un-conjugated
Application:	Western Blotting (WB)

Product Details

Immunogen:	Synthetic peptide located between aa99-148 of human RSPH9 (Q9H1X1, NP_689945). Percent identity by BLAST analysis: Human, Chimpanzee, Orangutan, Monkey, Marmoset, Bovine, Pig (100%), Gibbon, Galago, Mouse (92%), Panda, Dog, Horse (85%), Rat (78%). Type of Immunogen: Synthetic peptide
Specificity:	Human RSPH9 / C6orf206
Predicted Reactivity:	Percent identity by BLAST analysis: Human, Bovine (100%) Mouse (92%).
Purification:	Immunoaffinity purified

Target Details

Target:	RSPH9
---------	-------

Target Details

Alternative Name:	RSPH9 / C6orf206 (RSPH9 Products)
Background:	Name/Gene ID: RSPH9 Synonyms: RSPH9, CILD12, MRPS18AL1, C6orf206
Gene ID:	221421
NCBI Accession:	NP_689945
UniProt:	Q9H1X1

Application Details

Application Notes:	Optimal working dilution should be determined by the investigator.
Comment:	Target Species of Antibody: Human
Restrictions:	For Research Use only

Handling

Format:	Lyophilized
Reconstitution:	Distilled water
Concentration:	Lot specific
Buffer:	Lyophilized from PBS
Storage:	4 °C, -20 °C
Storage Comment:	Long term: -20°C, the use of 50% glycerol is recommended if storing aliquots in -20°C for long term use (up to 1 year) Short term (less than 1 week): 4°C. Avoid freeze-thaw cycles.

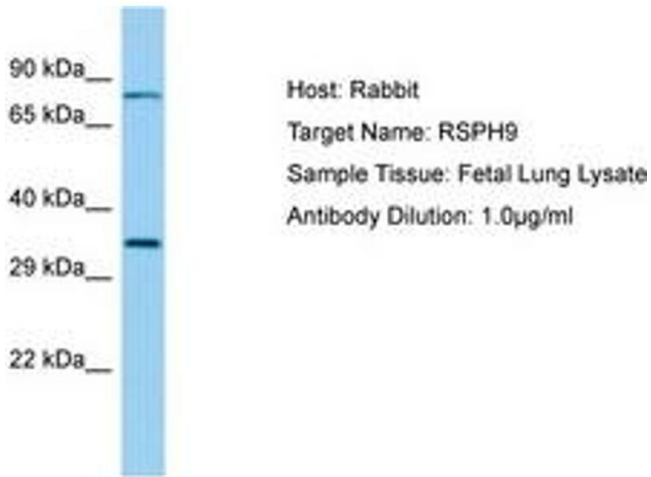


Image 1.