



[Go to Product page](#)

Datasheet for ABIN6749923

anti-CYB5D2 antibody (AA 178-227)

1 Image

Overview

Quantity:	100 µL
Target:	CYB5D2
Binding Specificity:	AA 178-227
Reactivity:	Mouse, Human, Rat, Rabbit, Monkey, Bat
Host:	Rabbit
Clonality:	Polyclonal
Conjugate:	This CYB5D2 antibody is un-conjugated
Application:	Western Blotting (WB)

Product Details

Immunogen:	Synthetic peptide located between aa178-227 of rat Cyb5d2 (Q6AY62, NP_001007672). Percent identity by BLAST analysis: Human, Gorilla, Orangutan, Gibbon, Monkey, Galago, Marmoset, Mouse, Rat, Panda, Bat, Rabbit (100%), Horse, Pig, Guinea pig (92%), Dog (85%), Bovine (84%). Type of Immunogen: Synthetic peptide
Specificity:	Rat CYB5D2
Predicted Reactivity:	Percent identity by BLAST analysis: Human, Mouse, Rat (100%).
Purification:	Immunoaffinity purified

Target Details

Target:	CYB5D2
---------	--------

Target Details

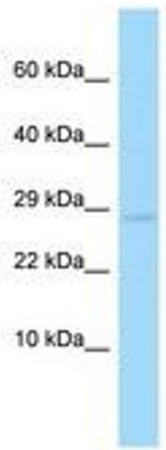
Alternative Name:	CYB5D2 (CYB5D2 Products)
Background:	Name/Gene ID: CYB5D2 Synonyms: CYB5D2, Neuferricin
Gene ID:	124936
NCBI Accession:	NP_001007672
UniProt:	Q8WUJ1

Application Details

Application Notes:	Optimal working dilution should be determined by the investigator.
Comment:	Target Species of Antibody: Rat
Restrictions:	For Research Use only

Handling

Format:	Lyophilized
Reconstitution:	Distilled water
Concentration:	Lot specific
Buffer:	Lyophilized from PBS
Storage:	4 °C, -20 °C
Storage Comment:	Long term: -20°C, the use of 50% glycerol is recommended if storing aliquots in -20°C for long term use (up to 1 year) Short term (less than 1 week): 4°C. Avoid freeze-thaw cycles.



Host: Rabbit
Target Name: Cyb5d2
Sample Tissue: Rat Pancreas Lysate
Antibody Dilution: 0.25µg/ml

Image 1.