



[Go to Product page](#)

Datasheet for ABIN6749924
anti-FAM81A antibody (AA 143-192)

1 Image

Overview

Quantity:	100 µL
Target:	FAM81A
Binding Specificity:	AA 143-192
Reactivity:	Human, Rat, Cow, Dog, Horse, Pig, Monkey
Host:	Rabbit
Clonality:	Polyclonal
Conjugate:	This FAM81A antibody is un-conjugated
Application:	Western Blotting (WB)

Product Details

Immunogen:	Synthetic peptide located between aa143-192 of rat Fam81a (D4A7T8, NP_001101633). Percent identity by BLAST analysis: Human, Chimpanzee, Gorilla, Orangutan, Gibbon, Monkey, Galago, Marmoset, Rat, Panda, Dog, Bovine, Horse, Pig, Opossum (100%), Mouse, Elephant, Bat, Rabbit, Guinea pig (92%), Platypus (85%). Type of Immunogen: Synthetic peptide
Specificity:	Rat FAM81A
Predicted Reactivity:	Percent identity by BLAST analysis: Human, Rat (100%) Mouse (92%).
Purification:	Immunoaffinity purified

Target Details

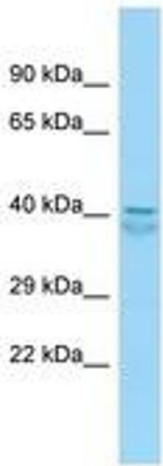
Target:	FAM81A
Alternative Name:	FAM81A (FAM81A Products)
Background:	Name/Gene ID: FAM81A Synonyms: FAM81A, Protein FAM81A
Gene ID:	145773
NCBI Accession:	NP_001101633
UniProt:	Q8TBF8

Application Details

Application Notes:	Optimal working dilution should be determined by the investigator.
Comment:	Target Species of Antibody: Rat
Restrictions:	For Research Use only

Handling

Format:	Lyophilized
Reconstitution:	Distilled water
Concentration:	Lot specific
Buffer:	Lyophilized from PBS
Storage:	4 °C,-20 °C
Storage Comment:	Long term: -20°C, the use of 50% glycerol is recommended if storing aliquots in -20°C for long term use (up to 1 year) Short term (less than 1 week): 4°C. Avoid freeze-thaw cycles.



Host: Rabbit
Target Name: Fam81a
Sample Tissue: Rat Kidney Lysate
Antibody Dilution: 1.0µg/ml

Image 1.