



[Go to Product page](#)

Datasheet for ABIN6749931  
**anti-WDR37 antibody (N-Term)**

1 Image

Overview

Quantity:	100 µL
Target:	WDR37
Binding Specificity:	N-Term
Reactivity:	Human, Mouse, Rat, Horse, Rabbit, Cow, Guinea Pig, Monkey, Bat, Chicken
Host:	Rabbit
Clonality:	Polyclonal
Conjugate:	This WDR37 antibody is un-conjugated
Application:	Western Blotting (WB)

Product Details

Immunogen:	Synthetic peptide from N-Terminus of mouse Wdr37 (Q05BF4, NP_001034478). Percent identity by BLAST analysis: Human, Chimpanzee, Gorilla, Orangutan, Gibbon, Monkey, Galago, Marmoset, Mouse, Rat, Elephant, Bovine, Bat, Rabbit, Horse, Opossum, Guinea pig, Turkey, Zebra finch, Chicken, Platypus, Lizard (100%), Salmon (92%), Xenopus, Zebrafish (85%).  Type of Immunogen: Synthetic peptide
Specificity:	Mouse WDR37
Predicted Reactivity:	Percent identity by BLAST analysis: Human, Mouse, Rat (100%) Salmon (92%) Xenopus (85%).
Purification:	Immunoaffinity purified

## Target Details

---

Target: WDR37

Alternative Name: WDR37 ([WDR37 Products](#))

Background: Name/Gene ID: WDR37

Synonyms: WDR37, KIAA0982, RP11-529L18.2, WD repeat domain 37

Gene ID: 22884

NCBI Accession: [NP\\_001034478](#)

UniProt: [Q9Y2I8](#)

## Application Details

---

Application Notes: Optimal working dilution should be determined by the investigator.

Comment: Target Species of Antibody: Mouse

Restrictions: For Research Use only

## Handling

---

Format: Lyophilized

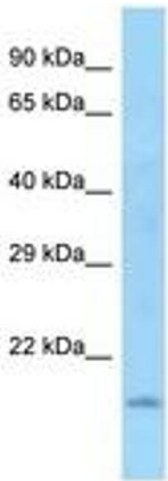
Reconstitution: Distilled water

Concentration: Lot specific

Buffer: Lyophilized from PBS

Storage: 4 °C, -20 °C

Storage Comment: Long term: -20°C, the use of 50% glycerol is recommended if storing aliquots in -20°C for long term use (up to 1 year)  
Short term (less than 1 week): 4°C. Avoid freeze-thaw cycles.



Rabbit Anti-Wdr37 Antibody  
Catalog Number: ARP54965  
Lot Number: QC28454  
Lane: Mouse Heart Lysate

Antibody Titration: 1.0µg/ml  
Gel Concentration: 12%

Image 1.