

Datasheet for ABIN6749932
anti-PHPT1 antibody (AA 69-118)



[Go to Product page](#)

1 Image

Overview

Quantity:	100 µL
Target:	PHPT1
Binding Specificity:	AA 69-118
Reactivity:	Human, Mouse, Rat, Cow, Guinea Pig, Monkey
Host:	Rabbit
Clonality:	Polyclonal
Conjugate:	This PHPT1 antibody is un-conjugated
Application:	Western Blotting (WB)

Product Details

Immunogen:	Synthetic peptide located between aa69-118 of mouse Phpt1 (Q9DAK9, NP_083569). Percent identity by BLAST analysis: Human, Chimpanzee, Orangutan, Monkey, Galago, Marmoset, Mouse, Rat, Elephant, Bovine, Guinea pig (100%), Dog, Rabbit (92%), Xenopus (91%), Panda, Pig, Opossum, Zebrafish (85%), Chicken, Stickleback (84%). Type of Immunogen: Synthetic peptide
Specificity:	Mouse PHPT1
Predicted Reactivity:	Percent identity by BLAST analysis: Human, Mouse, Rat, Bovine (100%) Rabbit (92%).
Purification:	Immunoaffinity purified

Target Details

Target:	PHPT1
Alternative Name:	PHPT1 (PHPT1 Products)
Background:	Name/Gene ID: PHPT1 Synonyms: PHPT1, BA216L13.10, HSPC141, Phosphohistidine phosphatase 1, Protein janus-A homolog, RP11-216L13.10, Sex-regulated protein janus-a, PHP14, CGI-202
Gene ID:	29085
NCBI Accession:	NP_083569
UniProt:	Q9NRX4
Pathways:	Positive Regulation of Peptide Hormone Secretion

Application Details

Application Notes:	Optimal working dilution should be determined by the investigator.
Comment:	Target Species of Antibody: Mouse
Restrictions:	For Research Use only

Handling

Format:	Lyophilized
Reconstitution:	Distilled water
Concentration:	Lot specific
Buffer:	Lyophilized from PBS
Storage:	4 °C,-20 °C
Storage Comment:	Long term: -20°C, the use of 50% glycerol is recommended if storing aliquots in -20°C for long term use (up to 1 year) Short term (less than 1 week): 4°C. Avoid freeze-thaw cycles.

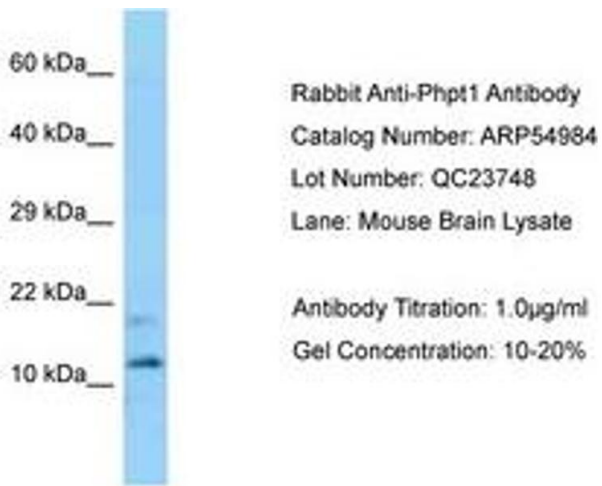


Image 1.