



[Go to Product page](#)

Datasheet for ABIN6749935
anti-Cabcoco1 antibody (C-Term)

1 Image

Overview

Quantity:	100 µL
Target:	Cabcoco1
Binding Specificity:	C-Term
Reactivity:	Dog, Guinea Pig, Horse, Human, Rabbit, Rat, Monkey
Host:	Rabbit
Clonality:	Polyclonal
Conjugate:	This Cabcoco1 antibody is un-conjugated
Application:	Western Blotting (WB)

Product Details

Immunogen:	Synthetic peptide from C-Terminus of rat RGD1306739 (D3ZD36, NP_001128048). Percent identity by BLAST analysis: Human, Gorilla, Orangutan, Gibbon, Galago, Marmoset, Rat, Panda, Dog, Rabbit, Horse, Guinea pig (100%), Chimpanzee (92%), Opossum (84%). Type of Immunogen: Synthetic peptide
Specificity:	Rat RGD1306739
Predicted Reactivity:	Percent identity by BLAST analysis: Human (100%) Rat (92%).
Purification:	Immunoaffinity purified

Target Details

Target:	Cabcoco1
---------	----------

Target Details

Alternative Name: RGD1306739 ([Cabccoco1 Products](#))

Background: Name/Gene ID: RGD1306739

Synonyms: RGD1306739

Gene ID: 361834

NCBI Accession: [NP_001128048](#)

Application Details

Application Notes: Optimal working dilution should be determined by the investigator.

Comment: Target Species of Antibody: Rat

Restrictions: For Research Use only

Handling

Format: Lyophilized

Reconstitution: Distilled water

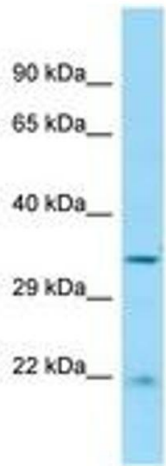
Concentration: Lot specific

Buffer: Lyophilized from PBS

Storage: 4 °C, -20 °C

Storage Comment: Long term: -20°C, the use of 50% glycerol is recommended if storing aliquots in -20°C for long term use (up to 1 year)

Short term (less than 1 week): 4°C. Avoid freeze-thaw cycles.



Host: Rabbit
Target Name: RGD1306739
Sample Tissue: Rat Spleen Lysate
Antibody Dilution: 1.0µg/ml

Image 1.