



[Go to Product page](#)

Datasheet for ABIN6749942
anti-RAB17 antibody (AA 121-170)

1 Image

Overview

Quantity:	100 µL
Target:	RAB17
Binding Specificity:	AA 121-170
Reactivity:	Human, Rat, Monkey
Host:	Rabbit
Clonality:	Polyclonal
Conjugate:	This RAB17 antibody is un-conjugated
Application:	Western Blotting (WB)

Product Details

Immunogen:	Synthetic peptide located between aa121-170 of rat Rab17 (B2RZ46, NP_001102833). Percent identity by BLAST analysis: Human, Chimpanzee, Gorilla, Orangutan, Gibbon, Monkey, Rat (100%), Mouse, Panda, Dog (92%), Elephant, Bovine, Bat, Horse, Paramecium (85%). Type of Immunogen: Synthetic peptide
Specificity:	Rat RAB17
Predicted Reactivity:	Percent identity by BLAST analysis: Human (100%) Mouse, Rat (92%).
Purification:	Immunoaffinity purified

Target Details

Target:	RAB17
---------	-------

Target Details

Alternative Name:	RAB17 (RAB17 Products)
Background:	Name/Gene ID: RAB17 Subfamily: RAS oncogene Family: Ras GTPase superfamily IPR001806 Synonyms: RAB17, Ras-related protein Rab-17
Gene ID:	64284
NCBI Accession:	NP_001102833
UniProt:	Q9H0T7

Application Details

Application Notes:	Optimal working dilution should be determined by the investigator.
Comment:	Target Species of Antibody: Rat
Restrictions:	For Research Use only

Handling

Format:	Lyophilized
Reconstitution:	Distilled water
Concentration:	Lot specific
Buffer:	Lyophilized from PBS
Storage:	4 °C,-20 °C
Storage Comment:	Long term: -20°C, the use of 50% glycerol is recommended if storing aliquots in -20°C for long term use (up to 1 year) Short term (less than 1 week): 4°C. Avoid freeze-thaw cycles.

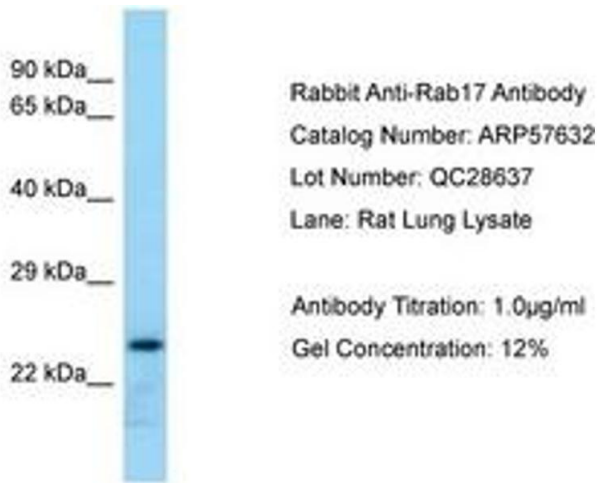


Image 1.