

Datasheet for ABIN6749945
anti-NAP1L4 antibody (AA 89-138)



[Go to Product page](#)

1 Image

Overview

Quantity:	100 µL
Target:	NAP1L4
Binding Specificity:	AA 89-138
Reactivity:	Human, Mouse, Rat, Rabbit, Cow, Dog, Guinea Pig, Horse, Monkey, Pig
Host:	Rabbit
Clonality:	Polyclonal
Conjugate:	This NAP1L4 antibody is un-conjugated
Application:	Western Blotting (WB)

Product Details

Immunogen:	Synthetic peptide located between aa89-138 of mouse Nap1l4 (Q78ZA7, NP_032698). Percent identity by BLAST analysis: Human, Chimpanzee, Gorilla, Orangutan, Gibbon, Monkey, Marmoset, Mouse, Rat, Elephant, Panda, Dog, Bovine, Rabbit, Horse, Pig, Guinea pig (100%), Bat (92%), Opossum (85%). Type of Immunogen: Synthetic peptide
Specificity:	Mouse NAP1L4
Predicted Reactivity:	Percent identity by BLAST analysis: Human, Mouse, Rat, Bovine (100%).
Purification:	Immunoaffinity purified

Target Details

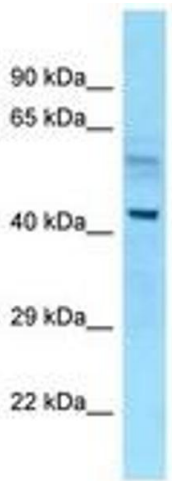
Target:	NAP1L4
Alternative Name:	NAP1L4 (NAP1L4 Products)
Background:	Name/Gene ID: NAP1L4 Synonyms: NAP1L4, NAP2L, NAP-2, NAP1L4b, NAP2, Nucleosome assembly protein 2, HNAP2
Gene ID:	4676
NCBI Accession:	NP_032698
UniProt:	Q99733

Application Details

Application Notes:	Optimal working dilution should be determined by the investigator.
Comment:	Target Species of Antibody: Mouse
Restrictions:	For Research Use only

Handling

Format:	Lyophilized
Reconstitution:	Distilled water
Concentration:	Lot specific
Buffer:	Lyophilized from PBS
Storage:	4 °C,-20 °C
Storage Comment:	Long term: -20°C, the use of 50% glycerol is recommended if storing aliquots in -20°C for long term use (up to 1 year) Short term (less than 1 week): 4°C. Avoid freeze-thaw cycles.



Rabbit Anti-Nap114 Antibody
Catalog Number: ARP58308
Lot Number: QC25044
Lane: Mouse Liver Lysate

Antibody Titration: 1.0µg/ml
Gel Concentration: 12%

Image 1.