



Datasheet for ABIN6749947
anti-ATG10 antibody (C-Term)



[Go to Product page](#)

1 Image

Overview

Quantity:	100 µL
Target:	ATG10
Binding Specificity:	C-Term
Reactivity:	Human, Rabbit, Dog, Horse, Bat
Host:	Rabbit
Clonality:	Polyclonal
Conjugate:	This ATG10 antibody is un-conjugated
Application:	Western Blotting (WB)

Product Details

Immunogen:	Synthetic peptide from C-Terminus of human ATG10 (Q9H0Y0, NP_001124500). Percent identity by BLAST analysis: Human, Chimpanzee, Gorilla, Orangutan, Gibbon, Marmoset, Elephant, Dog, Bat, Rabbit, Horse (100%), Monkey, Galago, Mouse, Rat, Panda, Bovine, Guinea pig (92%), Pufferfish (84%). Type of Immunogen: Synthetic peptide
Specificity:	Human ATG10
Predicted Reactivity:	Percent identity by BLAST analysis: Human (100%) Mouse, Rat, Bovine (92%).
Purification:	Immunoaffinity purified

Target Details

Target:	ATG10
Alternative Name:	ATG10 (ATG10 Products)
Background:	Name/Gene ID: ATG10 Synonyms: ATG10, Autophagy-related protein 10, Autophagy related 10, APG10-like, DKFZP586I0418, Pp12616, APG10, APG10L
Gene ID:	83734
NCBI Accession:	NP_001124500
UniProt:	Q9H0Y0
Pathways:	ER-Nucleus Signaling , Autophagy

Application Details

Application Notes:	Optimal working dilution should be determined by the investigator.
Comment:	Target Species of Antibody: Human
Restrictions:	For Research Use only

Handling

Format:	Lyophilized
Reconstitution:	Distilled water
Concentration:	Lot specific
Buffer:	Lyophilized from PBS
Storage:	4 °C, -20 °C
Storage Comment:	Long term: -20°C, the use of 50% glycerol is recommended if storing aliquots in -20°C for long term use (up to 1 year) Short term (less than 1 week): 4°C. Avoid freeze-thaw cycles.

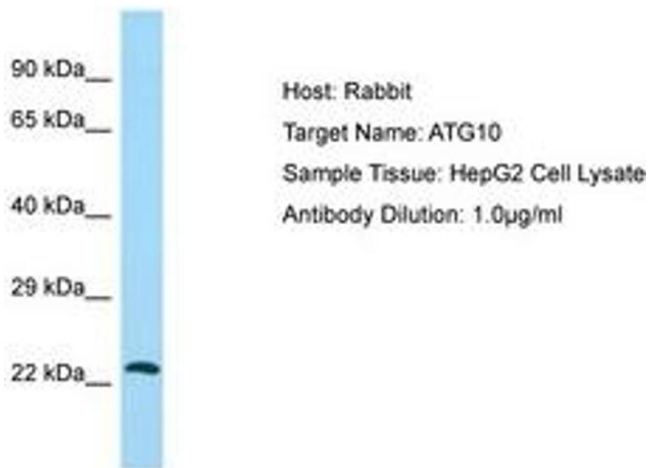


Image 1.