



[Go to Product page](#)

Datasheet for ABIN6749948
anti-ZER1 antibody (C-Term)

1 Image

Overview

Quantity:	100 µL
Target:	ZER1
Binding Specificity:	C-Term
Reactivity:	Human, Horse, Cow, Dog, Guinea Pig, Pig, Monkey, Chicken
Host:	Rabbit
Clonality:	Polyclonal
Conjugate:	This ZER1 antibody is un-conjugated
Application:	Western Blotting (WB)

Product Details

Immunogen:	Synthetic peptide from C-Terminus of human ZER1 (Q7Z7L7, NP_006327). Percent identity by BLAST analysis: Human, Chimpanzee, Gorilla, Orangutan, Gibbon, Monkey, Galago, Marmoset, Elephant, Panda, Dog, Bovine, Horse, Pig, Opossum, Guinea pig, Turkey, Zebra finch, Chicken (100%), Mouse, Rat, Bat (92%), Rabbit (85%). Type of Immunogen: Synthetic peptide
Specificity:	Human ZER1
Predicted Reactivity:	Percent identity by BLAST analysis: Human (100%) Mouse, Rat (92%).
Purification:	Immunoaffinity purified

Target Details

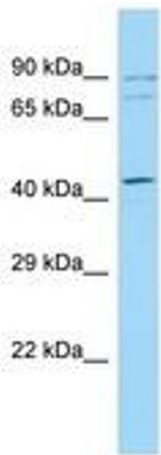
Target:	ZER1
Alternative Name:	ZER1 (ZER1 Products)
Background:	Name/Gene ID: ZER1 Synonyms: ZER1, C9orf60, Hzyg, Homolog of Zyg-11, Protein zer-1 homolog, ZYG11BL, ZYG, ZYG homolog, RP11-545E17.4, Zer-1 homolog (C. elegans), Zyg-11 homolog B-like protein
Gene ID:	10444
NCBI Accession:	NP_006327
UniProt:	Q7Z7L7
Pathways:	Proton Transport

Application Details

Application Notes:	Optimal working dilution should be determined by the investigator.
Comment:	Target Species of Antibody: Human
Restrictions:	For Research Use only

Handling

Format:	Lyophilized
Reconstitution:	Distilled water
Concentration:	Lot specific
Buffer:	Lyophilized from PBS
Storage:	4 °C, -20 °C
Storage Comment:	Long term: -20°C, the use of 50% glycerol is recommended if storing aliquots in -20°C for long term use (up to 1 year) Short term (less than 1 week): 4°C. Avoid freeze-thaw cycles.



Host: Rabbit
Target Name: ZER1
Sample Tissue: Fetal Kidney Lysate
Antibody Dilution: 1.0µg/ml

Image 1.