



[Go to Product page](#)

Datasheet for ABIN6749950  
**anti-RAD51D antibody (AA 259-308)**

1 Image

Overview

Quantity:	100 µL
Target:	RAD51D
Binding Specificity:	AA 259-308
Reactivity:	Human
Host:	Rabbit
Clonality:	Polyclonal
Conjugate:	This RAD51D antibody is un-conjugated
Application:	Western Blotting (WB)

Product Details

Immunogen:	Synthetic peptide located between aa259-308 of human RAD51D (O75771, NP_002869). Percent identity by BLAST analysis: Human, Chimpanzee, Gorilla (100%), Orangutan, Gibbon (92%), Monkey, Galago, Elephant (85%), Mouse (78%).  Type of Immunogen: Synthetic peptide
Specificity:	Human RAD51L3 / RAD51D
Predicted Reactivity:	Percent identity by BLAST analysis: Human (100%).
Purification:	Immunoaffinity purified

Target Details

Target:	RAD51D
---------	--------

## Target Details

---

Alternative Name: RAD51L3 / RAD51D ([RAD51D Products](#))

---

Background: Name/Gene ID: RAD51D

Synonyms: RAD51D, BROVCA4, HsTRAD, RAD51 homolog D, RAD51-like protein 3, Recombination repair protein, R51H3, RAD51L3, RAD51 (*S. cerevisiae*)-like 3, RAD51-like 3 (*S. cerevisiae*), TRAD

---

Gene ID: 5892

---

NCBI Accession: [NP\\_002869](#)

---

UniProt: [O75771](#)

---

## Application Details

---

Application Notes: Optimal working dilution should be determined by the investigator.

---

Comment: Target Species of Antibody: Human

---

Restrictions: For Research Use only

---

## Handling

---

Format: Lyophilized

---

Reconstitution: Distilled water

---

Concentration: Lot specific

---

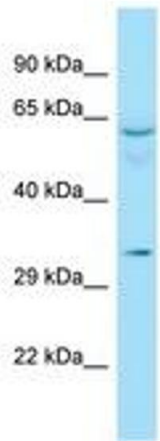
Buffer: Lyophilized from PBS

---

Storage: 4 °C, -20 °C

---

Storage Comment: Long term: -20°C, the use of 50% glycerol is recommended if storing aliquots in -20°C for long term use (up to 1 year)  
Short term (less than 1 week): 4°C. Avoid freeze-thaw cycles.



Host: Rabbit  
Target Name: RAD51D  
Sample Tissue: Fetal Stomach Lysate  
Antibody Dilution: 1.0µg/ml

Image 1.