



[Go to Product page](#)

Datasheet for ABIN6749952
anti-AMMECR1 antibody (C-Term)

1 Image

Overview

Quantity:	100 µL
Target:	AMMECR1
Binding Specificity:	C-Term
Reactivity:	Human, Mouse, Guinea Pig, Zebrafish (Danio rerio), Horse, Rabbit, Cow, Rat, Dog, Monkey, Bat, Pig, Chicken, Xenopus laevis
Host:	Rabbit
Clonality:	Polyclonal
Conjugate:	This AMMECR1 antibody is un-conjugated
Application:	Western Blotting (WB)

Product Details

Immunogen:	Synthetic peptide from C-Terminus of human AMMECR1 (Q9Y4X0, NP_001020751). Percent identity by BLAST analysis: Human, Chimpanzee, Gorilla, Orangutan, Gibbon, Monkey, Galago, Marmoset, Mouse, Rat, Elephant, Panda, Dog, Bovine, Bat, Rabbit, Horse, Pig, Opossum, Guinea pig, Turkey, Zebra finch, Chicken, Lizard, Xenopus, Stickleback, Medaka, Pufferfish, Zebrafish (100%), Drosophila (83%). Type of Immunogen: Synthetic peptide
Specificity:	Human AMMECR1
Predicted Reactivity:	Percent identity by BLAST analysis: Human, Mouse, Xenopus, Zebrafish (100%) Rat (92%).
Purification:	Immunoaffinity purified

Target Details

Target:	AMMECR1
Alternative Name:	AMMECR1 (AMMECR1 Products)
Background:	Name/Gene ID: AMMECR1 Synonyms: AMMECR1, AMMERC1
Gene ID:	9949
NCBI Accession:	NP_001020751
UniProt:	Q9Y4X0

Application Details

Application Notes:	Optimal working dilution should be determined by the investigator.
Comment:	Target Species of Antibody: Human
Restrictions:	For Research Use only

Handling

Format:	Lyophilized
Reconstitution:	Distilled water
Concentration:	Lot specific
Buffer:	Lyophilized from PBS
Storage:	4 °C,-20 °C
Storage Comment:	Long term: -20°C, the use of 50% glycerol is recommended if storing aliquots in -20°C for long term use (up to 1 year) Short term (less than 1 week): 4°C. Avoid freeze-thaw cycles.

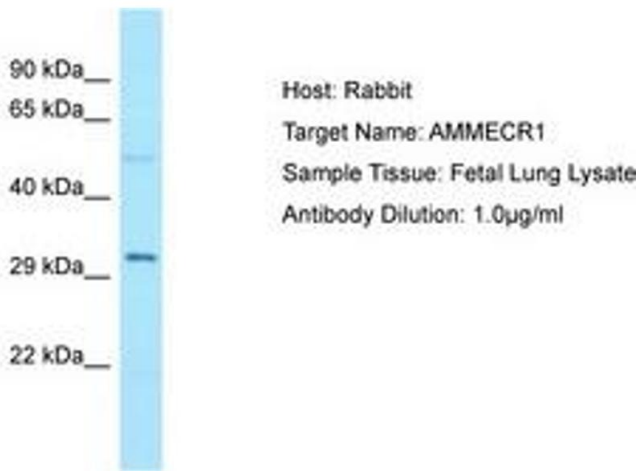


Image 1.