



[Go to Product page](#)

Datasheet for ABIN6749960  
**anti-PGP antibody (C-Term)**

1 Image

Overview

|                      |                                    |
|----------------------|------------------------------------|
| Quantity:            | 100 µL                             |
| Target:              | PGP                                |
| Binding Specificity: | C-Term                             |
| Reactivity:          | Human, Monkey                      |
| Host:                | Rabbit                             |
| Clonality:           | Polyclonal                         |
| Conjugate:           | This PGP antibody is un-conjugated |
| Application:         | Western Blotting (WB)              |

Product Details

|                       |  |
|-----------------------|--|
| Immunogen:            | Synthetic peptide from C-Terminus of human PGP (A6NDG6, NP_001035830). Percent identity by BLAST analysis: Human, Chimpanzee, Gorilla, Orangutan, Gibbon, Monkey (100%), Elephant (92%), Galago, Marmoset, Panda, Dog, Horse, Guinea pig (85%), Bat (84%), Mouse, Rat (78%).<br><br>Type of Immunogen: Synthetic peptide |
| Specificity:          | Human PGP  |
| Predicted Reactivity: | Percent identity by BLAST analysis: Human (100%).  |
| Purification:         | Immunoaffinity purified  |

Target Details

|         |     |
|---------|-----|
| Target: | PGP |
|---------|-----|

## Target Details

---

Alternative Name: [PGP \(PGP Products\)](#)

Background: Name/Gene ID: PGP

Synonyms: PGP, PGPase, Phosphoglycolate phosphatase

Gene ID: 283871

NCBI Accession: [NP\\_001035830](#)

UniProt: [A6NDG6](#)

## Application Details

---

Application Notes: Optimal working dilution should be determined by the investigator.

Comment: Target Species of Antibody: Human

Restrictions: For Research Use only

## Handling

---

Format: Lyophilized

Reconstitution: Distilled water

Concentration: Lot specific

Buffer: Lyophilized from PBS

Storage: 4 °C, -20 °C

Storage Comment: Long term: -20°C, the use of 50% glycerol is recommended if storing aliquots in -20°C for long term use (up to 1 year)

Short term (less than 1 week): 4°C. Avoid freeze-thaw cycles.

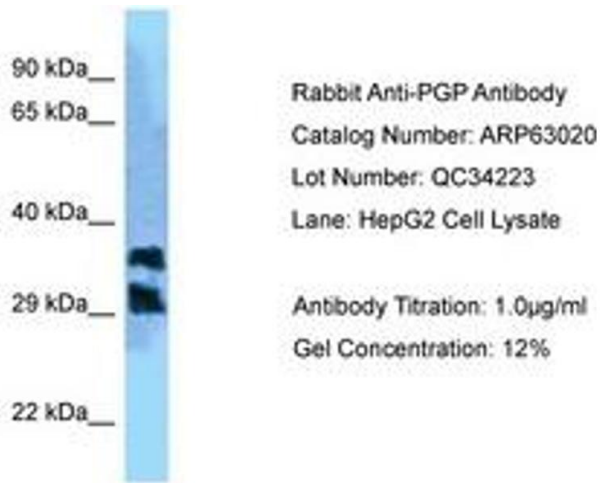


Image 1.