



[Go to Product page](#)

Datasheet for ABIN6749969
anti-VKORC1 antibody (AA 27-76)

1 Image

Overview

Quantity:	100 µL
Target:	VKORC1
Binding Specificity:	AA 27-76
Reactivity:	Human, Rabbit, Cow, Bat, Monkey
Host:	Rabbit
Clonality:	Polyclonal
Conjugate:	This VKORC1 antibody is un-conjugated
Application:	Western Blotting (WB), Immunohistochemistry (IHC)

Product Details

Immunogen:	Synthetic peptide located between aa27-76 of human VKORC1 (Q9BQB6, NP_996560). Percent identity by BLAST analysis: Human, Chimpanzee, Gorilla, Orangutan, Gibbon, Monkey, Galago, Marmoset, Panda, Bovine, Bat, Rabbit (100%), Hamster, Elephant, Horse, Pig, Guinea pig (92%), Mouse, Rat (85%). Type of Immunogen: Synthetic peptide
Specificity:	Human VKORC1
Predicted Reactivity:	Percent identity by BLAST analysis: Human, Panda, Bovine (100%) Mouse, Rat (85%).
Purification:	Immunoaffinity purified

Target Details

Target: VKORC1

Alternative Name: VKORC1 ([VKORC1 Products](#))

Background: Name/Gene ID: VKORC1

Synonyms: VKORC1, EDTP308, MST134, MST576, IMAGE3455200, VKCFD2, VKOR

Gene ID: 79001

NCBI Accession: [NP_996560](#)

UniProt: [Q9BQB6](#)

Application Details

Application Notes: Optimal working dilution should be determined by the investigator.

Comment: Target Species of Antibody: Human

Restrictions: For Research Use only

Handling

Format: Lyophilized

Reconstitution: Distilled water

Concentration: Lot specific

Buffer: Lyophilized from PBS

Storage: 4 °C, -20 °C

Storage Comment: Long term: -20°C, the use of 50% glycerol is recommended if storing aliquots in -20°C for long term use (up to 1 year)
Short term (less than 1 week): 4°C. Avoid freeze-thaw cycles.

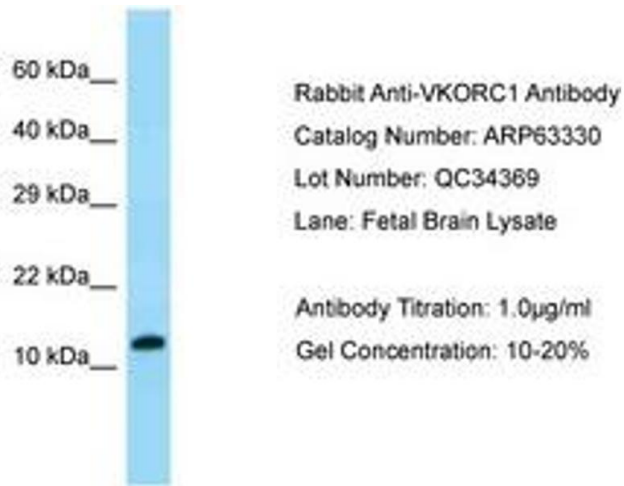


Image 1.