

Datasheet for ABIN6749970
anti-SHF antibody (AA 22-71)[Go to Product page](#)

1 Image

Overview

Quantity:	100 µL
Target:	SHF
Binding Specificity:	AA 22-71
Reactivity:	Human, Monkey
Host:	Rabbit
Clonality:	Polyclonal
Conjugate:	This SHF antibody is un-conjugated
Application:	Western Blotting (WB)

Product Details

Immunogen:	Synthetic peptide located between aa22-71 of human SHF. Percent identity by BLAST analysis: Human, Chimpanzee, Gorilla, Orangutan, Gibbon, Monkey, Galago, Marmoset (100%), Bovine, Bat, Horse, Pig (92%), Elephant, Dog (85%), Mouse (78%). Type of Immunogen: Synthetic peptide
Specificity:	Human SHF
Predicted Reactivity:	Percent identity by BLAST analysis: Human (100%) Bovine (92%).
Purification:	Immunoaffinity purified

Target Details

Target:	SHF
---------	-----

Target Details

Alternative Name: SHF ([SHF Products](#))

Background: Name/Gene ID: SHF

Synonyms: SHF

Gene ID: 90525

UniProt: [Q7M4L6](#)

Application Details

Application Notes: Optimal working dilution should be determined by the investigator.

Comment: Target Species of Antibody: Human

Restrictions: For Research Use only

Handling

Format: Lyophilized

Reconstitution: Distilled water

Concentration: Lot specific

Buffer: Lyophilized from PBS

Storage: 4 °C, -20 °C

Storage Comment: Long term: -20°C, the use of 50% glycerol is recommended if storing aliquots in -20°C for long term use (up to 1 year)

Short term (less than 1 week): 4°C. Avoid freeze-thaw cycles.

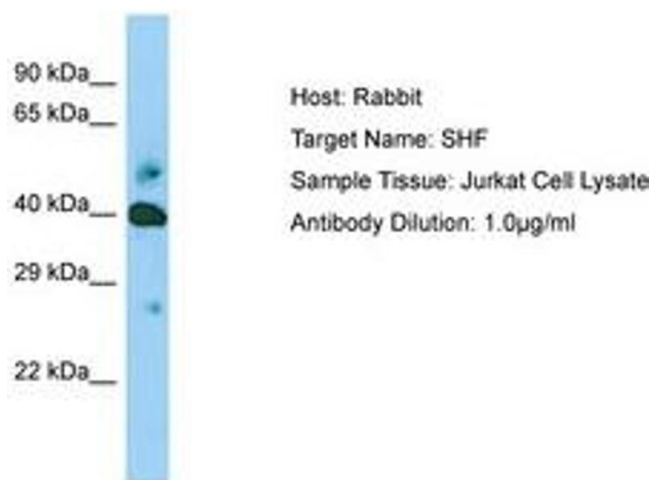


Image 1.