

Datasheet for ABIN6749973
anti-BCAR1 antibody (AA 456-505)[Go to Product page](#)

1 Image

Overview

Quantity:	100 µL
Target:	BCAR1
Binding Specificity:	AA 456-505
Reactivity:	Human, Mouse, Rat, Dog, Monkey, Cow, Guinea Pig, Horse, Rabbit, Pig, Bat, Xenopus laevis
Host:	Rabbit
Clonality:	Polyclonal
Conjugate:	This BCAR1 antibody is un-conjugated
Application:	Western Blotting (WB)

Product Details

Immunogen:	Synthetic peptide located between aa456-505 of human BCAR1 (B3KWE2, NP_001164192). Percent identity by BLAST analysis: Human, Chimpanzee, Gorilla, Orangutan, Gibbon, Monkey, Galago, Marmoset, Mouse, Rat, Elephant, Panda, Dog, Bovine, Bat, Rabbit, Horse, Pig, Guinea pig, Zebra finch, Platypus, Xenopus (100%), Opossum, Turkey, Chicken, Lizard, Pufferfish (85%). Type of Immunogen: Synthetic peptide
Specificity:	Human BCAR1 / p130Cas
Predicted Reactivity:	Percent identity by BLAST analysis: Human, Mouse, Rat, Bovine, Xenopus (100%).
Purification:	Immunoaffinity purified

Target Details

Target:	BCAR1
Alternative Name:	BCAR1 / p130Cas (BCAR1 Products)
Background:	Name/Gene ID: BCAR1 Synonyms: BCAR1, CAS, CAS1, CRKAS, CASS1, CRK-associated substrate, p130Cas
Gene ID:	9564
NCBI Accession:	NP_001164192
UniProt:	P56945
Pathways:	EGFR Signaling Pathway , Neurotrophin Signaling Pathway , CXCR4-mediated Signaling Events , Platelet-derived growth Factor Receptor Signaling

Application Details

Application Notes:	Optimal working dilution should be determined by the investigator.
Comment:	Target Species of Antibody: Human
Restrictions:	For Research Use only

Handling

Format:	Lyophilized
Reconstitution:	Distilled water
Concentration:	Lot specific
Buffer:	Lyophilized from PBS
Storage:	4 °C,-20 °C
Storage Comment:	Long term: -20°C, the use of 50% glycerol is recommended if storing aliquots in -20°C for long term use (up to 1 year) Short term (less than 1 week): 4°C. Avoid freeze-thaw cycles.

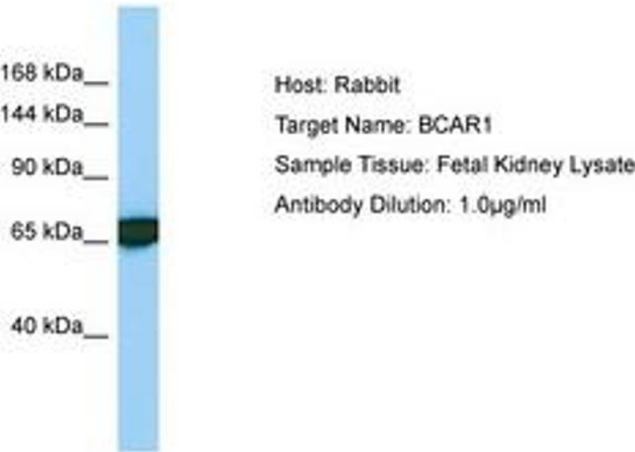


Image 1.