



[Go to Product page](#)

Datasheet for ABIN6749989
anti-VPS13B antibody (AA 76-125)

1 Image

Overview

| | |
|----------------------|---------------------------------------|
| Quantity: | 100 µL |
| Target: | VPS13B |
| Binding Specificity: | AA 76-125 |
| Reactivity: | Human |
| Host: | Rabbit |
| Clonality: | Polyclonal |
| Conjugate: | This VPS13B antibody is un-conjugated |
| Application: | Western Blotting (WB) |

Product Details

| | |
|-----------------------|---|
| Immunogen: | Synthetic peptide located between aa76-125 of human VPS13B (Q7Z7G8, NP_858047). Percent identity by BLAST analysis: Human (100%), Chimpanzee, Orangutan, Mouse, Rat, Guinea pig (92%), Gibbon, Monkey, Galago, Marmoset, Elephant, Panda, Bovine, Horse, Pig, Lizard (85%). Type of Immunogen: Synthetic peptide |
| Specificity: | Human VPS13B |
| Predicted Reactivity: | Percent identity by BLAST analysis: Human (100%) Mouse, Rat (92%) Panda (85%). |
| Purification: | Immunoaffinity purified |

Target Details

| | |
|---------|--------|
| Target: | VPS13B |
|---------|--------|

Target Details

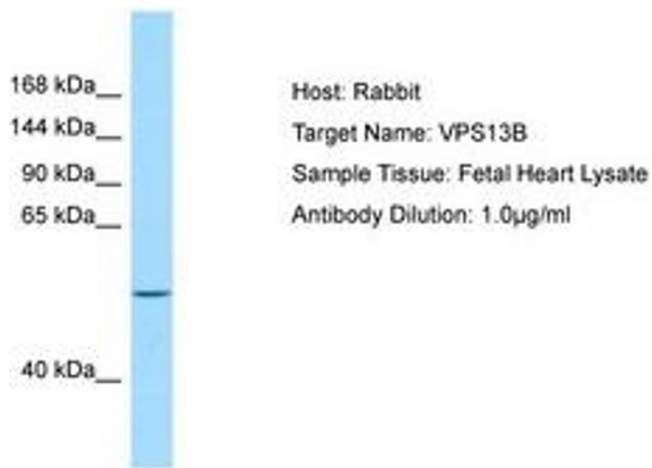
| | |
|-------------------|--|
| Alternative Name: | VPS13B (VPS13B Products) |
| Background: | Name/Gene ID: VPS13B Synonyms: VPS13B, Cohen syndrome 1, Cohen syndrome protein 1, KIAA0532, CHS1, COH1 |
| Gene ID: | 157680 |
| NCBI Accession: | NP_858047 |
| UniProt: | Q7Z7G8 |

Application Details

| | |
|--------------------|--|
| Application Notes: | Optimal working dilution should be determined by the investigator. |
| Comment: | Target Species of Antibody: Human |
| Restrictions: | For Research Use only |

Handling

| | |
|------------------|---|
| Format: | Lyophilized |
| Reconstitution: | Distilled water |
| Concentration: | Lot specific |
| Buffer: | Lyophilized from PBS |
| Storage: | 4 °C, -20 °C |
| Storage Comment: | Long term: -20°C, the use of 50% glycerol is recommended if storing aliquots in -20°C for long term use (up to 1 year) Short term (less than 1 week): 4°C. Avoid freeze-thaw cycles. |



Host: Rabbit
Target Name: VPS13B
Sample Tissue: Fetal Heart Lysate
Antibody Dilution: 1.0µg/ml

Image 1.