



[Go to Product page](#)

Datasheet for ABIN6749992

## anti-CTNND2 antibody (AA 1066-1115)

### 1 Image

#### Overview

Quantity:	100 µL
Target:	CTNND2
Binding Specificity:	AA 1066-1115
Reactivity:	Human
Host:	Rabbit
Clonality:	Polyclonal
Conjugate:	This CTNND2 antibody is un-conjugated
Application:	Western Blotting (WB)

#### Product Details

Immunogen:	Synthetic peptide located between aa1066-1115 of human CTNND2 (Q9UQB3, NP_001323). Percent identity by BLAST analysis: Human, Chimpanzee, Gorilla, Orangutan, Gibbon, Marmoset (100%), Monkey, Galago, Elephant, Dog, Bovine, Bat, Rabbit, Horse, Pig, Guinea pig, Zebrafish (92%), Opossum, Turkey, Zebra finch, Chicken, Platypus, Lizard, Xenopus (85%), Mouse (78%).  Type of Immunogen: Synthetic peptide
Specificity:	Human CTNND2 / Delta-catenin
Predicted Reactivity:	Percent identity by BLAST analysis: Human (100%) Zebrafish (92%).
Purification:	Immunoaffinity purified

## Target Details

---

Target:	CTNND2
Alternative Name:	CTNND2 / delta-2 Catenin ( <a href="#">CTNND2 Products</a> )
Background:	Name/Gene ID: CTNND2 Family: Catenin  Synonyms: CTNND2, Delta-catenin, GT24, Neurojungin, NPRAP, Catenin delta-2, T-cell delta-catenin
Gene ID:	1501
NCBI Accession:	<a href="#">NP_001323</a>
UniProt:	<a href="#">Q9UQB3</a>

## Application Details

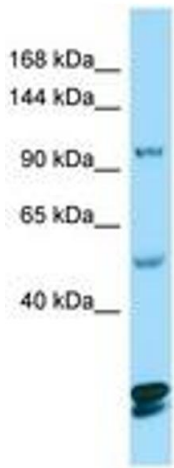
---

Application Notes:	Optimal working dilution should be determined by the investigator.
Comment:	Target Species of Antibody: Human
Restrictions:	For Research Use only

## Handling

---

Format:	Lyophilized
Reconstitution:	Distilled water
Concentration:	Lot specific
Buffer:	Lyophilized from PBS
Storage:	4 °C, -20 °C
Storage Comment:	Long term: -20°C, the use of 50% glycerol is recommended if storing aliquots in -20°C for long term use (up to 1 year) Short term (less than 1 week): 4°C. Avoid freeze-thaw cycles.



Host: Rabbit  
Target Name: CTNND2  
Sample Tissue: 721\_B Cell Lysate  
Antibody Dilution: 1.0µg/ml

Image 1.