



[Go to Product page](#)

Datasheet for ABIN6750002
anti-NLE1 antibody (C-Term)

1 Image

Overview

Quantity:	100 µL
Target:	NLE1
Binding Specificity:	C-Term
Reactivity:	Human, Mouse, Rat, Guinea Pig, Horse, Monkey, Cow, Dog, Rabbit, Zebrafish (Danio rerio), Bat, Chicken, Pig, Xenopus laevis
Host:	Rabbit
Clonality:	Polyclonal
Conjugate:	This NLE1 antibody is un-conjugated
Application:	Western Blotting (WB)

Product Details

Immunogen:	Synthetic peptide from C-Terminus of human NLE1 (Q9NVX2, NP_060566). Percent identity by BLAST analysis: Human, Chimpanzee, Gorilla, Orangutan, Gibbon, Monkey, Galago, Marmoset, Mouse, Rat, Elephant, Dog, Bovine, Bat, Rabbit, Horse, Pig, Opossum, Guinea pig, Turkey, Zebra finch, Chicken, Xenopus, Stickleback, Medaka, Pufferfish, Zebrafish (100%), Panda, Salmon (92%). Type of Immunogen: Synthetic peptide
Specificity:	Human NLE1
Predicted Reactivity:	Percent identity by BLAST analysis: Human, Mouse, Rat, Bovine, Xenopus, Zebrafish (100%) Salmon (92%).

Product Details

Purification: Immunoaffinity purified

Target Details

Target: NLE1

Alternative Name: NLE1 ([NLE1 Products](#))

Background: Name/Gene ID: NLE1

Synonyms: NLE1, Notchless gene homolog, Nle, Notchless protein homolog 1

Gene ID: 54475

NCBI Accession: [NP_060566](#)

UniProt: [Q9NVX2](#)

Application Details

Application Notes: Optimal working dilution should be determined by the investigator.

Comment: Target Species of Antibody: Human

Restrictions: For Research Use only

Handling

Format: Lyophilized

Reconstitution: Distilled water

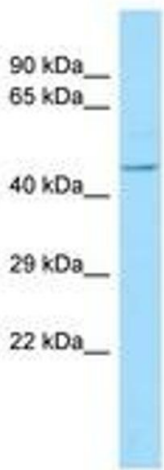
Concentration: Lot specific

Buffer: Lyophilized from PBS

Storage: 4 °C, -20 °C

Storage Comment: Long term: -20°C, the use of 50% glycerol is recommended if storing aliquots in -20°C for long term use (up to 1 year)

Short term (less than 1 week): 4°C. Avoid freeze-thaw cycles.



Host: Rabbit
Target Name: NLE1
Sample Tissue: Fetal Brain Lysate
Antibody Dilution: 1.0µg/ml

Image 1.