



[Go to Product page](#)

Datasheet for ABIN6750003
anti-TAS1R1 antibody (AA 327-376)

1 Image

Overview

Quantity:	100 µL
Target:	TAS1R1
Binding Specificity:	AA 327-376
Reactivity:	Human
Host:	Rabbit
Clonality:	Polyclonal
Conjugate:	This TAS1R1 antibody is un-conjugated
Application:	Western Blotting (WB)

Product Details

Immunogen:	Synthetic peptide located between aa327-376 of human TAS1R1 (Q7RTX1, NP_619642). Percent identity by BLAST analysis: Human (100%), Chimpanzee, Gorilla, Orangutan, Gibbon, Monkey (92%). Type of Immunogen: Synthetic peptide
Specificity:	Human T1R1 / TAS1R1
Predicted Reactivity:	Percent identity by BLAST analysis: Human (100%).
Purification:	Immunoaffinity purified

Target Details

Target:	TAS1R1
---------	--------

Target Details

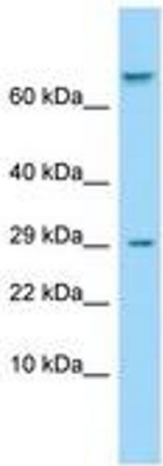
Alternative Name:	T1R1 / TAS1R1 (TAS1R1 Products)
Background:	Name/Gene ID: TAS1R1 Subfamily: Taste Family: GPCR Synonyms: TAS1R1, G-protein coupled receptor 70, GPR70, GM148, GPCRB3, G protein-coupled receptor 70, GPCR-B3, T1R1, Taste receptor type 1 member 1, TR1
Gene ID:	80835
NCBI Accession:	NP_619642
UniProt:	Q7RTX1

Application Details

Application Notes:	Optimal working dilution should be determined by the investigator.
Comment:	Target Species of Antibody: Human
Restrictions:	For Research Use only

Handling

Format:	Lyophilized
Reconstitution:	Distilled water
Concentration:	Lot specific
Buffer:	Lyophilized from PBS
Storage:	4 °C, -20 °C
Storage Comment:	Long term: -20°C, the use of 50% glycerol is recommended if storing aliquots in -20°C for long term use (up to 1 year) Short term (less than 1 week): 4°C. Avoid freeze-thaw cycles.



Host: Rabbit
Target Name: TAS1R1
Sample Tissue: ACHN Cell Lysate
Antibody Dilution: 1.0µg/ml

Image 1.