

Datasheet for ABIN6750015
anti-NEFM antibody (AA 429-478)



[Go to Product page](#)

1 Image

Overview

Quantity:	100 µL
Target:	NEFM
Binding Specificity:	AA 429-478
Reactivity:	Human, Monkey, Bat
Host:	Rabbit
Clonality:	Polyclonal
Conjugate:	This NEFM antibody is un-conjugated
Application:	Western Blotting (WB)

Product Details

Immunogen:	Synthetic peptide located between aa429-478 of human NEFM (E9PBF7, NP_001099011). Percent identity by BLAST analysis: Human, Chimpanzee, Gorilla, Orangutan, Monkey, Marmoset, Elephant, Bat (100%), Sheep, Panda, Bovine, Rabbit (92%), Galago, Dog, Horse, Opossum (85%). Type of Immunogen: Synthetic peptide
Specificity:	Human NF-M
Predicted Reactivity:	Percent identity by BLAST analysis: Human, Chimpanzee, Monkey (100%) Panda, Rabbit, Sheep, Bovine (92%).
Purification:	Immunoaffinity purified

Target Details

Target: NEFM

Alternative Name: NEFM / NF-M ([NEFM Products](#))

Background: Name/Gene ID: NEFM

Synonyms: NEFM, 160 kDa neurofilament protein, NEF3, NF-M, NFM, Neurofilament 3

Gene ID: 4741

NCBI Accession: [NP_001099011](#)

UniProt: [P07197](#)

Pathways: [Brown Fat Cell Differentiation](#)

Application Details

Application Notes: Optimal working dilution should be determined by the investigator.

Comment: Target Species of Antibody: Human

Restrictions: For Research Use only

Handling

Format: Lyophilized

Reconstitution: Distilled water

Concentration: Lot specific

Buffer: Lyophilized from PBS

Storage: 4 °C, -20 °C

Storage Comment: Long term: -20°C, the use of 50% glycerol is recommended if storing aliquots in -20°C for long term use (up to 1 year)
Short term (less than 1 week): 4°C. Avoid freeze-thaw cycles.

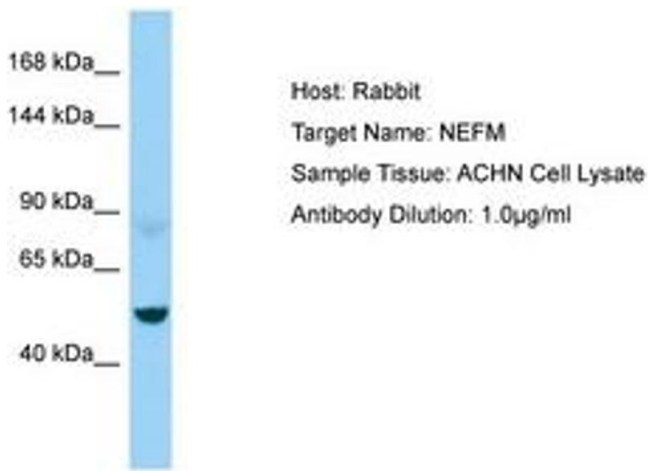


Image 1.