



[Go to Product page](#)

Datasheet for ABIN6750022  
**anti-RTN4RL2 antibody (C-Term)**

1 Image

Overview

Quantity:	100 µL
Target:	RTN4RL2
Binding Specificity:	C-Term
Reactivity:	Human, Rat, Mouse, Horse, Bat, Monkey
Host:	Rabbit
Clonality:	Polyclonal
Conjugate:	This RTN4RL2 antibody is un-conjugated
Application:	Western Blotting (WB)

Product Details

Immunogen:	Synthetic peptide from C-Terminus of human RTN4RL2 (Q86UN3, NP_848665). Percent identity by BLAST analysis: Human, Gorilla, Gibbon, Monkey, Marmoset, Mouse, Rat, Bat, Horse (100%), Galago (92%), Bovine (84%).  Type of Immunogen: Synthetic peptide
Specificity:	Human RTN4RL2
Predicted Reactivity:	Percent identity by BLAST analysis: Human, Mouse, Rat (100%).
Purification:	Immunoaffinity purified

Target Details

Target:	RTN4RL2
---------	---------

## Target Details

---

Alternative Name: RTN4RL2 ([RTN4RL2 Products](#))

Background: Name/Gene ID: RTN4RL2

Synonyms: RTN4RL2, NGRL3, Nogo-66 receptor homolog 1, Reticulon 4 receptor-like 2, Reticulon-4 receptor-like 2, NGRH1, NgR2, Nogo receptor-like 3

Gene ID: 349667

NCBI Accession: [NP\\_848665](#)

UniProt: [Q86UN3](#)

## Application Details

---

Application Notes: Optimal working dilution should be determined by the investigator.

Comment: Target Species of Antibody: Human

Restrictions: For Research Use only

## Handling

---

Format: Lyophilized

Reconstitution: Distilled water

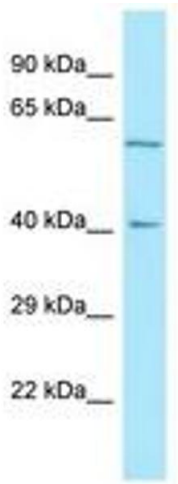
Concentration: Lot specific

Buffer: Lyophilized from PBS

Storage: 4 °C, -20 °C

Storage Comment: Long term: -20°C, the use of 50% glycerol is recommended if storing aliquots in -20°C for long term use (up to 1 year)

Short term (less than 1 week): 4°C. Avoid freeze-thaw cycles.



Host: Rabbit  
Target Name: RTN4RL2  
Sample Tissue: A549 Cell Lysate  
Antibody Dilution: 1.0µg/ml

Image 1.