

Datasheet for ABIN6750023  
**anti-SLC13A4 antibody (AA 220-269)**



[Go to Product page](#)

1 Image

## Overview

Quantity:	100 µL
Target:	SLC13A4
Binding Specificity:	AA 220-269
Reactivity:	Human
Host:	Rabbit
Clonality:	Polyclonal
Conjugate:	This SLC13A4 antibody is un-conjugated
Application:	Western Blotting (WB)

## Product Details

Immunogen:	Synthetic peptide located between aa220-269 of human SLC13A4 (Q9UKG4, NP_036582). Percent identity by BLAST analysis: Human, Chimpanzee, Gorilla, Orangutan, Gibbon (100%), Monkey, Galago, Marmoset (92%), Elephant (90%), Horse (84%), Mouse, Rat (78%).  Type of Immunogen: Synthetic peptide
Specificity:	Human SLC13A4
Predicted Reactivity:	Percent identity by BLAST analysis: Human (100%).
Purification:	Immunoaffinity purified

## Target Details

Target:	SLC13A4
---------	---------

## Target Details

---

Alternative Name:	SLC13A4 ( <a href="#">SLC13A4 Products</a> )
Background:	Name/Gene ID: SLC13A4 Subfamily: Sodium:sulfate symporter Family: Transporter  Synonyms: SLC13A4, Sulphate transporter 1, SUT1, NaS2, Sulfate transporter 1, SUT-1
Gene ID:	26266
NCBI Accession:	<a href="#">NP_036582</a>
UniProt:	<a href="#">Q9UKG4</a>

## Application Details

---

Application Notes:	Optimal working dilution should be determined by the investigator.
Comment:	Target Species of Antibody: Human
Restrictions:	For Research Use only

## Handling

---

Format:	Lyophilized
Reconstitution:	Distilled water
Concentration:	Lot specific
Buffer:	Lyophilized from PBS
Storage:	4 °C,-20 °C
Storage Comment:	Long term: -20°C, the use of 50% glycerol is recommended if storing aliquots in -20°C for long term use (up to 1 year) Short term (less than 1 week): 4°C. Avoid freeze-thaw cycles.

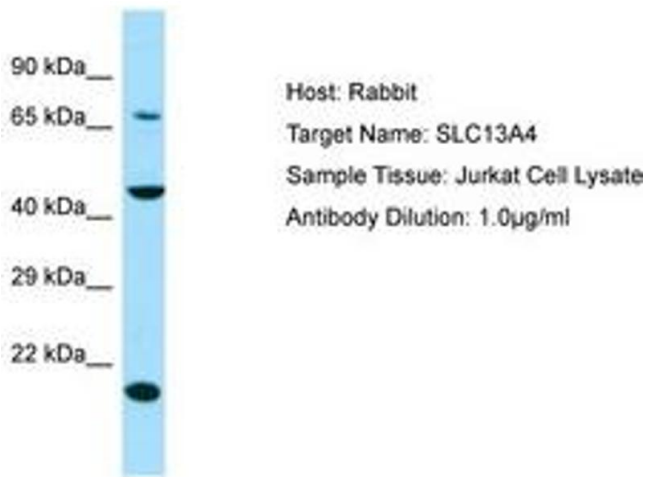


Image 1.