

Datasheet for ABIN6750031
anti-OR13G1 antibody (AA 236-285)[Go to Product page](#)

1 Image

Overview

Quantity:	100 µL
Target:	OR13G1
Binding Specificity:	AA 236-285
Reactivity:	Human, Pig, Monkey
Host:	Rabbit
Clonality:	Polyclonal
Conjugate:	This OR13G1 antibody is un-conjugated
Application:	Western Blotting (WB)

Product Details

Immunogen:	Synthetic peptide located between aa236-285 of human OR13G1 (Q8NGZ3, NP_001005487). Percent identity by BLAST analysis: Human, Chimpanzee, Orangutan, Monkey, Marmoset, Pig (100%), Gorilla, Rat, Dog, Horse, Guinea pig (92%), Galago, Mouse, Opossum (85%). Type of Immunogen: Synthetic peptide
Specificity:	Human OR13G1
Predicted Reactivity:	Percent identity by BLAST analysis: Human (100%) Rat (92%) Mouse (85%).
Purification:	Immunoaffinity purified

Target Details

Target:	OR13G1
---------	--------

Target Details

Alternative Name:	OR13G1 (OR13G1 Products)
Background:	Name/Gene ID: OR13G1 Subfamily: Olfactory Family: GPCR Synonyms: OR13G1, Olfactory receptor OR1-37, Olfactory receptor 13G1, OR1-37
Gene ID:	441933
NCBI Accession:	NP_001005487
UniProt:	Q8NGZ3

Application Details

Application Notes:	Optimal working dilution should be determined by the investigator.
Comment:	Target Species of Antibody: Human
Restrictions:	For Research Use only

Handling

Format:	Lyophilized
Reconstitution:	Distilled water
Concentration:	Lot specific
Buffer:	Lyophilized from PBS
Storage:	4 °C,-20 °C
Storage Comment:	Long term: -20°C, the use of 50% glycerol is recommended if storing aliquots in -20°C for long term use (up to 1 year) Short term (less than 1 week): 4°C. Avoid freeze-thaw cycles.

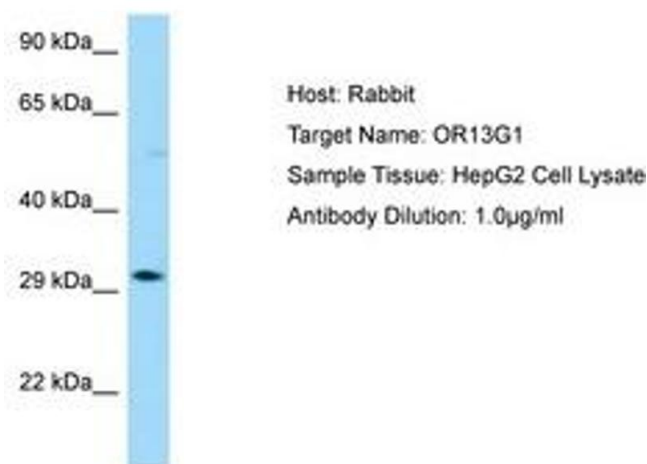


Image 1.