



[Go to Product page](#)

Datasheet for ABIN6750033
anti-PIP5K1B antibody (AA 395-444)

1 Image

Overview

Quantity:	100 µL
Target:	PIP5K1B
Binding Specificity:	AA 395-444
Reactivity:	Human, Mouse, Rat, Cow, Dog, Horse, Bat, Monkey
Host:	Rabbit
Clonality:	Polyclonal
Conjugate:	This PIP5K1B antibody is un-conjugated
Application:	Western Blotting (WB)

Product Details

Immunogen:	Synthetic peptide located between aa395-444 of human PIP5K1B (O14986, NP_003549). Percent identity by BLAST analysis: Human, Chimpanzee, Gorilla, Orangutan, Gibbon, Monkey, Galago, Marmoset, Mouse, Rat, Elephant, Dog, Bovine, Bat, Horse (100%), Rabbit, Zebra finch, Xenopus (92%), Opossum, Turkey, Chicken, Platypus, Lizard (85%). Type of Immunogen: Synthetic peptide
Specificity:	Human PIP5K1B
Predicted Reactivity:	Percent identity by BLAST analysis: Human, Mouse, Rat (100%) Chicken (85%).
Purification:	Immunoaffinity purified

Target Details

Target:	PIP5K1B
Alternative Name:	PIP5K1B (PIP5K1B Products)
Background:	Name/Gene ID: PIP5K1B Family: Non-Protein Kinase Synonyms: PIP5K1B, MSS4, PIP5KIbeta, Protein STM-7, STM7, PIP5K1-beta, PtdIns(4)P-5-kinase 1 beta
Gene ID:	8395
NCBI Accession:	NP_003549
UniProt:	O14986
Pathways:	PI3K-Akt Signaling , Inositol Metabolic Process , Cell-Cell Junction Organization

Application Details

Application Notes:	Optimal working dilution should be determined by the investigator.
Comment:	Target Species of Antibody: Human
Restrictions:	For Research Use only

Handling

Format:	Lyophilized
Reconstitution:	Distilled water
Concentration:	Lot specific
Buffer:	Lyophilized from PBS
Storage:	4 °C,-20 °C
Storage Comment:	Long term: -20°C, the use of 50% glycerol is recommended if storing aliquots in -20°C for long term use (up to 1 year) Short term (less than 1 week): 4°C. Avoid freeze-thaw cycles.

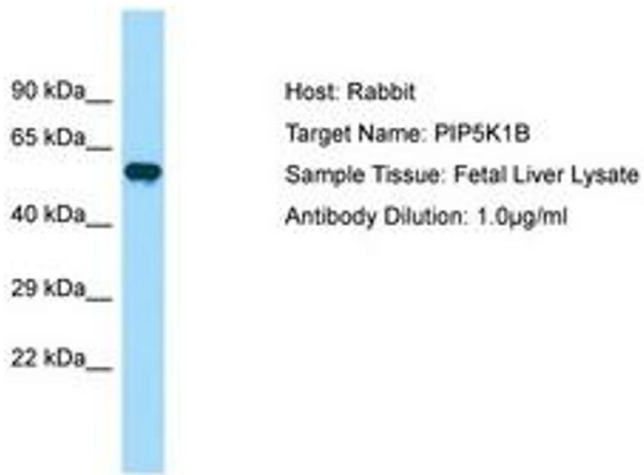


Image 1.