



Datasheet for ABIN6750047  
**anti-DACT3 antibody (AA 255-304)**



[Go to Product page](#)

1 Image

Overview

|                      |                                      |
|----------------------|--------------------------------------|
| Quantity:            | 100 µL                               |
| Target:              | DACT3                                |
| Binding Specificity: | AA 255-304                           |
| Reactivity:          | Human, Pig, Cow, Monkey              |
| Host:                | Rabbit                               |
| Clonality:           | Polyclonal                           |
| Conjugate:           | This DACT3 antibody is un-conjugated |
| Application:         | Western Blotting (WB)                |

Product Details

|                       |   |
|-----------------------|---|
| Immunogen:            | Synthetic peptide located between aa255-304 of human DACT3 (Q96B18, NP_659493). Percent identity by BLAST analysis: Human, Chimpanzee, Orangutan, Monkey, Marmoset, Elephant, Bovine, Pig (100%), Mouse, Rat (92%), Guinea pig (84%).<br><br>Type of Immunogen: Synthetic peptide |
| Specificity:          | Human DACT3   |
| Predicted Reactivity: | Percent identity by BLAST analysis: Human (100%) Mouse, Rat (92%).  |
| Purification:         | Immunoaffinity purified   |

Target Details

|         |       |
|---------|-------|
| Target: | DACT3 |
|---------|-------|

## Target Details

---

Alternative Name: DACT3 ([DACT3 Products](#))

---

Background: Name/Gene ID: DACT3

Synonyms: DACT3, Arginine rich region 1, Dapper homolog 3, Arginine-rich region 1 protein, RRR1

---

Gene ID: 147906

---

NCBI Accession: [NP\\_659493](#)

---

UniProt: [Q96B18](#)

---

## Application Details

---

Application Notes: Optimal working dilution should be determined by the investigator.

---

Comment: Target Species of Antibody: Human

---

Restrictions: For Research Use only

---

## Handling

---

Format: Lyophilized

---

Reconstitution: Distilled water

---

Concentration: Lot specific

---

Buffer: Lyophilized from PBS

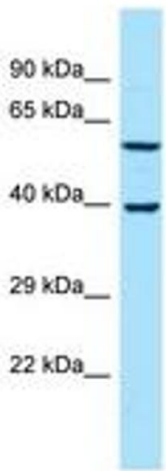
---

Storage: 4 °C, -20 °C

---

Storage Comment: Long term: -20°C, the use of 50% glycerol is recommended if storing aliquots in -20°C for long term use (up to 1 year)

Short term (less than 1 week): 4°C. Avoid freeze-thaw cycles.



Host: Rabbit  
Target Name: DACT3  
Sample Tissue: MCF7 Cell Lysate  
Antibody Dilution: 1.0µg/ml

Image 1.