



[Go to Product page](#)

Datasheet for ABIN6750058
anti-MAPRE2 antibody (AA 157-206)

1 Image

Overview

Quantity:	100 µL
Target:	MAPRE2
Binding Specificity:	AA 157-206
Reactivity:	Human, Mouse, Rat, Cow, Dog, Monkey, Chicken, Horse, Rabbit, Guinea Pig, Bat, Pig
Host:	Rabbit
Clonality:	Polyclonal
Conjugate:	This MAPRE2 antibody is un-conjugated
Application:	Western Blotting (WB)

Product Details

Immunogen:	Synthetic peptide located between aa157-206 of human MAPRE2 (F5H1V8, NP_001243349). Percent identity by BLAST analysis: Human, Chimpanzee, Gorilla, Orangutan, Gibbon, Monkey, Galago, Marmoset, Mouse, Rat, Elephant, Panda, Dog, Bovine, Bat, Rabbit, Horse, Pig, Guinea pig, Turkey, Zebra finch, Chicken, Platypus, Lizard (100%), Opossum, Xenopus (92%). Type of Immunogen: Synthetic peptide
Specificity:	Human MAPRE2 / EB2
Predicted Reactivity:	Percent identity by BLAST analysis: Human, Mouse, Rat, Bovine, Chicken (100%) Xenopus (92%).
Purification:	Immunoaffinity purified

Target Details

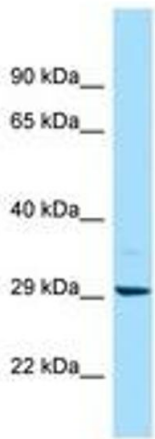
Target:	MAPRE2
Alternative Name:	MAPRE2 / EB2 (MAPRE2 Products)
Background:	Name/Gene ID: MAPRE2 Synonyms: MAPRE2, APC-binding protein EB2, APC-binding protein EB1, EB1, EB2, End-binding protein 2
Gene ID:	10982
NCBI Accession:	NP_001243349
UniProt:	Q15555

Application Details

Application Notes:	Optimal working dilution should be determined by the investigator.
Comment:	Target Species of Antibody: Human
Restrictions:	For Research Use only

Handling

Format:	Lyophilized
Reconstitution:	Distilled water
Concentration:	Lot specific
Buffer:	Lyophilized from PBS
Storage:	4 °C, -20 °C
Storage Comment:	Long term: -20°C, the use of 50% glycerol is recommended if storing aliquots in -20°C for long term use (up to 1 year) Short term (less than 1 week): 4°C. Avoid freeze-thaw cycles.



Host: Rabbit
Target Name: MAPRE2
Sample Tissue: COLO205 Cell Lysate
Antibody Dilution: 1.0µg/ml

Image 1.