



[Go to Product page](#)

Datasheet for ABIN6750059
anti-MRPS16 antibody (C-Term)

1 Image

Overview

| | |
|----------------------|---------------------------------------|
| Quantity: | 100 µL |
| Target: | MRPS16 |
| Binding Specificity: | C-Term |
| Reactivity: | Human, Monkey |
| Host: | Rabbit |
| Clonality: | Polyclonal |
| Conjugate: | This MRPS16 antibody is un-conjugated |
| Application: | Western Blotting (WB) |

Product Details

| | |
|-----------------------|--|
| Immunogen: | Synthetic peptide from C-Terminus of human MRPS16 (Q9Y3D3, NP_057149). Percent identity by BLAST analysis: Human, Chimpanzee, Gorilla, Gibbon, Marmoset (100%), Orangutan (92%), Elephant (83%). Type of Immunogen: Synthetic peptide |
| Specificity: | Human MRPS16 |
| Predicted Reactivity: | Percent identity by BLAST analysis: Human (100%). |
| Purification: | Immunoaffinity purified |

Target Details

| | |
|---------|--------|
| Target: | MRPS16 |
|---------|--------|

Target Details

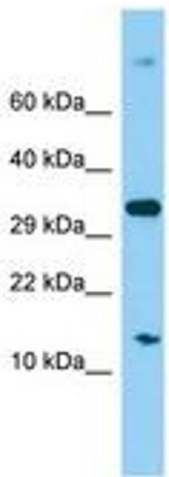
| | |
|-------------------|---|
| Alternative Name: | MRPS16 (MRPS16 Products) |
| Background: | Name/Gene ID: MRPS16 Synonyms: MRPS16, CGI-132, RPMS16, S16mt, MRP-S16, COXPD2 |
| Gene ID: | 51021 |
| NCBI Accession: | NP_057149 |
| UniProt: | Q9Y3D3 |

Application Details

| | |
|--------------------|--|
| Application Notes: | Optimal working dilution should be determined by the investigator. |
| Comment: | Target Species of Antibody: Human |
| Restrictions: | For Research Use only |

Handling

| | |
|------------------|---|
| Format: | Lyophilized |
| Reconstitution: | Distilled water |
| Concentration: | Lot specific |
| Buffer: | Lyophilized from PBS |
| Storage: | 4 °C, -20 °C |
| Storage Comment: | Long term: -20°C, the use of 50% glycerol is recommended if storing aliquots in -20°C for long term use (up to 1 year) Short term (less than 1 week): 4°C. Avoid freeze-thaw cycles. |



Host: Rabbit
Target Name: MRPS16
Sample Tissue: 293T Cell Lysate
Antibody Dilution: 1.0µg/ml

Image 1.