



Datasheet for ABIN6750068
anti-RASL11A antibody (AA 41-90)



[Go to Product page](#)

1 Image

Overview

Quantity:	100 µL
Target:	RASL11A
Binding Specificity:	AA 41-90
Reactivity:	Human, Cow, Dog, Guinea Pig, Horse, Mouse, Rabbit, Rat, Bat, Chicken, Pig
Host:	Rabbit
Clonality:	Polyclonal
Conjugate:	This RASL11A antibody is un-conjugated
Application:	Western Blotting (WB)

Product Details

Immunogen:	Synthetic peptide located between aa41-90 of human RASL11A (Q6T310, NP_996563). Percent identity by BLAST analysis: Human, Chimpanzee, Gorilla, Orangutan, Gibbon, Monkey, Galago, Mouse, Rat, Elephant, Panda, Dog, Bovine, Bat, Rabbit, Horse, Pig, Opossum, Guinea pig, Zebra finch, Chicken (100%), Marmoset, Platypus, Lizard, Stickleback, Medaka, Pike, Pufferfish, Zebrafish (92%), Xenopus (90%), Turkey (84%). Type of Immunogen: Synthetic peptide
Specificity:	Human RASL11A
Predicted Reactivity:	Percent identity by BLAST analysis: Human, Mouse, Rat (100%) Bovine, Xenopus (84%).
Purification:	Immunoaffinity purified

Target Details

Target:	RASL11A
Alternative Name:	RASL11A (RASL11A Products)
Background:	Name/Gene ID: RASL11A Synonyms: RASL11A, RAS-like, family 11, member A
Gene ID:	387496
NCBI Accession:	NP_996563
UniProt:	Q6T310

Application Details

Application Notes:	Optimal working dilution should be determined by the investigator.
Comment:	Target Species of Antibody: Human
Restrictions:	For Research Use only

Handling

Format:	Lyophilized
Reconstitution:	Distilled water
Concentration:	Lot specific
Buffer:	Lyophilized from PBS
Storage:	4 °C,-20 °C
Storage Comment:	Long term: -20°C, the use of 50% glycerol is recommended if storing aliquots in -20°C for long term use (up to 1 year) Short term (less than 1 week): 4°C. Avoid freeze-thaw cycles.

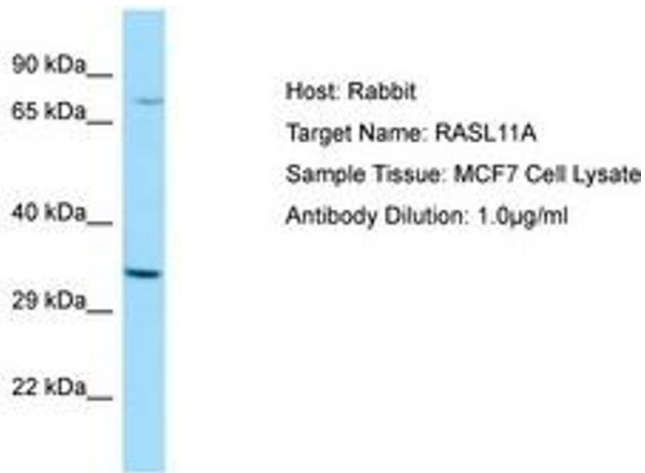


Image 1.