



[Go to Product page](#)

Datasheet for ABIN6750069  
**anti-REEP3 antibody (AA 154-203)**

1 Image

Overview

Quantity:	100 µL
Target:	REEP3
Binding Specificity:	AA 154-203
Reactivity:	Human
Host:	Rabbit
Clonality:	Polyclonal
Conjugate:	This REEP3 antibody is un-conjugated
Application:	Western Blotting (WB)

Product Details

Immunogen:	Synthetic peptide located between aa154-203 of human REEP3 (Q6NUK4, NP_001001330). Percent identity by BLAST analysis: Human, Chimpanzee, Gorilla, Orangutan, Marmoset (100%), Gibbon, Monkey, Elephant, Rabbit, Pig (92%), Bat, Horse (85%).  Type of Immunogen: Synthetic peptide
Specificity:	Human REEP3
Predicted Reactivity:	Percent identity by BLAST analysis: Human (100%).
Purification:	Immunoaffinity purified

Target Details

Target:	REEP3
---------	-------

## Target Details

---

Alternative Name: REEP3 ([REEP3 Products](#))

---

Background: Name/Gene ID: REEP3

Synonyms: REEP3, C10orf74, Receptor accessory protein 3

---

Gene ID: 221035

---

NCBI Accession: [NP\\_001001330](#)

---

UniProt: [Q6NUK4](#)

---

## Application Details

---

Application Notes: Optimal working dilution should be determined by the investigator.

---

Comment: Target Species of Antibody: Human

---

Restrictions: For Research Use only

---

## Handling

---

Format: Lyophilized

---

Reconstitution: Distilled water

---

Concentration: Lot specific

---

Buffer: Lyophilized from PBS

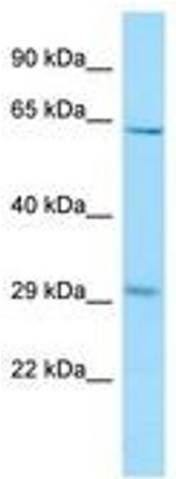
---

Storage: 4 °C, -20 °C

---

Storage Comment: Long term: -20°C, the use of 50% glycerol is recommended if storing aliquots in -20°C for long term use (up to 1 year)

Short term (less than 1 week): 4°C. Avoid freeze-thaw cycles.



Host: Rabbit  
Target Name: REEP3  
Sample Tissue: MCF7 Cell Lysate  
Antibody Dilution: 1.0µg/ml

Image 1.