



[Go to Product page](#)

Datasheet for ABIN6750071
anti-SIRPb2 antibody (AA 110-159)

1 Image

Overview

Quantity:	100 µL
Target:	SIRPb2
Binding Specificity:	AA 110-159
Reactivity:	Human, Rabbit, Monkey
Host:	Rabbit
Clonality:	Polyclonal
Conjugate:	This SIRPb2 antibody is un-conjugated
Application:	Western Blotting (WB)

Product Details

Immunogen:	Synthetic peptide located between aa110-159 of human SIRPB2 (E9PCW6, NP_001128308). Percent identity by BLAST analysis: Human, Chimpanzee, Gorilla, Orangutan, Gibbon, Monkey, Marmoset, Rabbit (100%), Galago, Elephant, Panda, Horse, Pig (92%), Dog, Bovine (85%). Type of Immunogen: Synthetic peptide
Specificity:	Human SIRPB2
Predicted Reactivity:	Percent identity by BLAST analysis: Human (100%).
Purification:	Immunoaffinity purified

Target Details

Target:	SIRPb2
---------	--------

Target Details

Alternative Name: [SIRPB2 \(SIRPb2 Products\)](#)

Background: Name/Gene ID: SIRPB2

Synonyms: SIRPB2, DJ776F14.2, PTPNS1L3, SIRP-beta-2, PTPN1L

Gene ID: 284759

NCBI Accession: [NP_001128308](#)

UniProt: [Q5JXA9](#)

Application Details

Application Notes: Optimal working dilution should be determined by the investigator.

Comment: Target Species of Antibody: Human

Restrictions: For Research Use only

Handling

Format: Lyophilized

Reconstitution: Distilled water

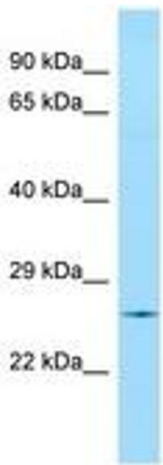
Concentration: Lot specific

Buffer: Lyophilized from PBS

Storage: 4 °C, -20 °C

Storage Comment: Long term: -20°C, the use of 50% glycerol is recommended if storing aliquots in -20°C for long term use (up to 1 year)

Short term (less than 1 week): 4°C. Avoid freeze-thaw cycles.



Host: Rabbit
Target Name: SIRPB2
Sample Tissue: Fetal Heart Lysate
Antibody Dilution: 1.0µg/ml

Image 1.