



[Go to Product page](#)

Datasheet for ABIN6750075  
**anti-SPEM1 antibody (AA 72-121)**

1 Image

Overview

Quantity:	100 µL
Target:	SPEM1
Binding Specificity:	AA 72-121
Reactivity:	Human
Host:	Rabbit
Clonality:	Polyclonal
Conjugate:	This SPEM1 antibody is un-conjugated
Application:	Western Blotting (WB)

Product Details

Immunogen:	Synthetic peptide located between aa72-121 of human SPEM1 (NP_955371). Percent identity by BLAST analysis: Human, Chimpanzee, Gorilla, Orangutan, Gibbon (100%), Marmoset (92%), Dog (84%).  Type of Immunogen: Synthetic peptide
Specificity:	Human SPEM1
Predicted Reactivity:	Percent identity by BLAST analysis: Human (100%).
Purification:	Immunoaffinity purified

Target Details

Target:	SPEM1
---------	-------

## Target Details

---

Alternative Name: [SPEM1 \(SPEM1 Products\)](#)

Background: Name/Gene ID: SPEM1

Synonyms: SPEM1, C17orf83, Spermatid maturation protein 1, Spermatid maturation 1

Gene ID: 374768

NCBI Accession: [NP\\_955371](#)

UniProt: [Q8N4L4](#)

## Application Details

---

Application Notes: Optimal working dilution should be determined by the investigator.

Comment: Target Species of Antibody: Human

Restrictions: For Research Use only

## Handling

---

Format: Lyophilized

Reconstitution: Distilled water

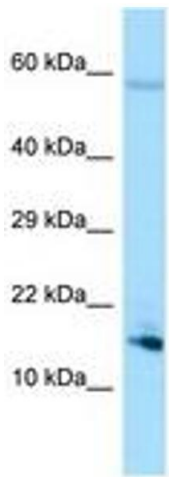
Concentration: Lot specific

Buffer: Lyophilized from PBS

Storage: 4 °C, -20 °C

Storage Comment: Long term: -20°C, the use of 50% glycerol is recommended if storing aliquots in -20°C for long term use (up to 1 year)

Short term (less than 1 week): 4°C. Avoid freeze-thaw cycles.



Host: Rabbit  
Target Name: SPEM1  
Sample Tissue: Jurkat Cell Lysate  
Antibody Dilution: 1.0µg/ml

Image 1.